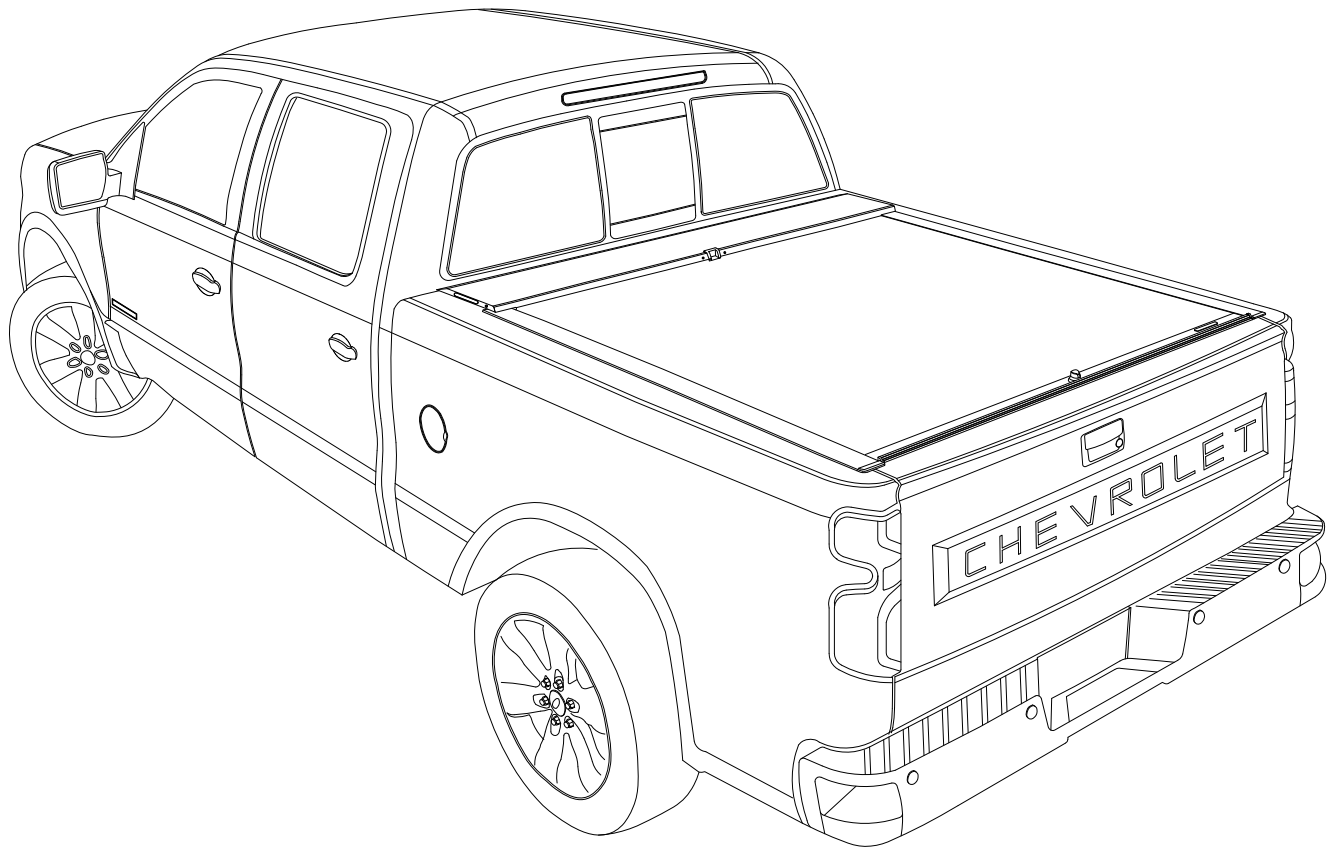




# Installation Guide

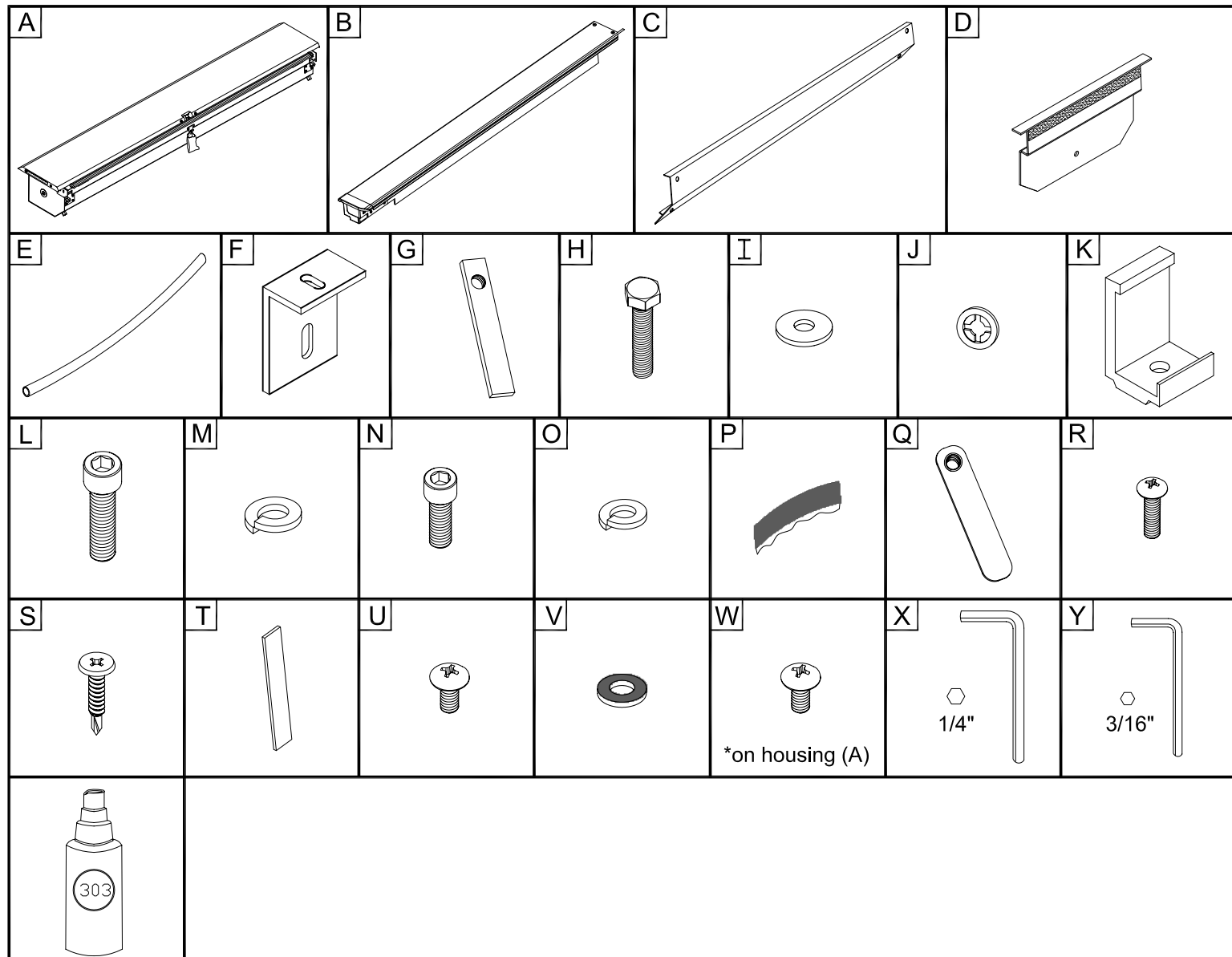
## 2019 Chevrolet Silverado / GM Sierra



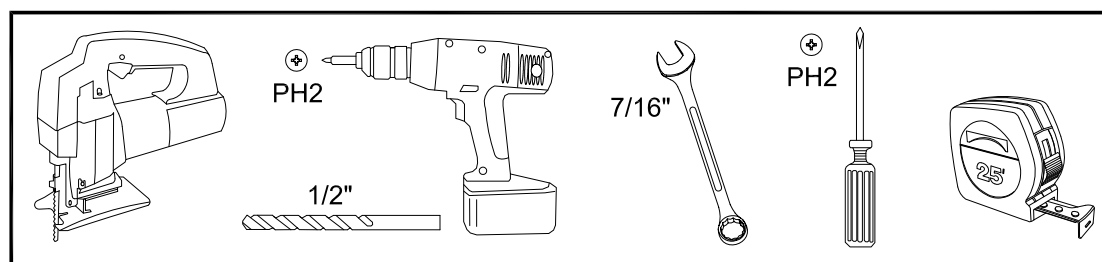
Product Code  
223-224-225

# Parts List

Item	Part Name	Qty.	Item	Part Name	Qty.	Item	Part Name	Qty.
A	Housing	1	J	Nylon Retaining Washer	4	S	#8 x 3/4" Self Tap Screw	2
B	Track	2	K	Bed Clamp	4/6	T	Shim	4
C	Cargo Shield	1	L	5/16" Socket Cap Screw	4/6	U	1/4-20 x 3/8" Screw	4
D	Housing Bracket	2	M	5/16" Lock Washer	4/6	V	Black Rubber Washer	4
E	Drain Tube	2	N	1/4" Socket Cap Screw	2	W	1/4" Lid Screw	2
F	Track Bracket	2	O	1/4" Lock Washer	2	X	Allen Wrench (1/4")	1
G	Threaded Tang	4	P	Butyl Caulk Strip	2	Y	Allen Wrench (3/16")	1
H	1/4-20 x 1" Bolt	4	Q	Cargo Nut	2		303 Vinyl Protector	1
I	1/4" Flat Washer	4	R	#10-24 Screw	2			



## Tools Needed



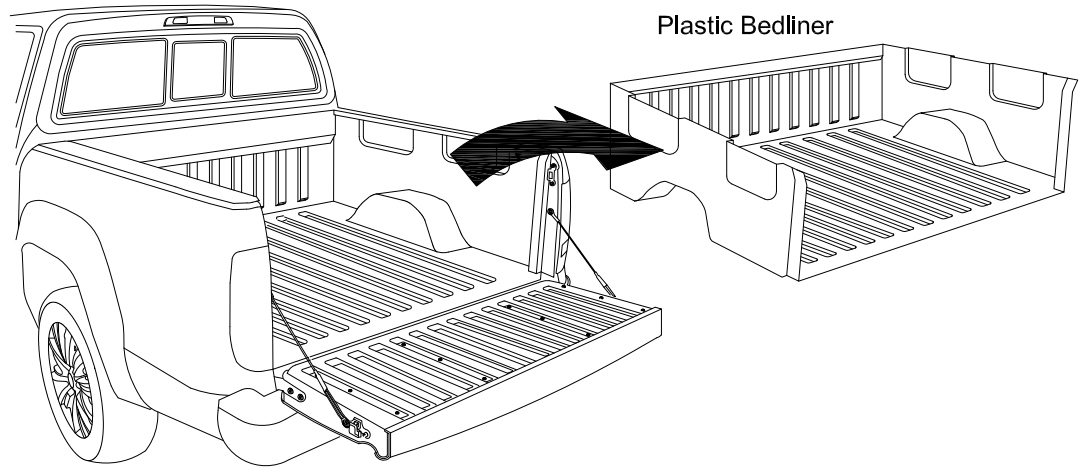


## Caution

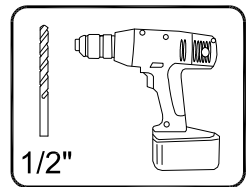
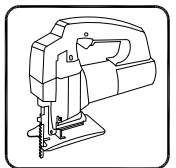
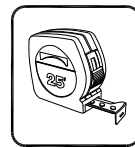
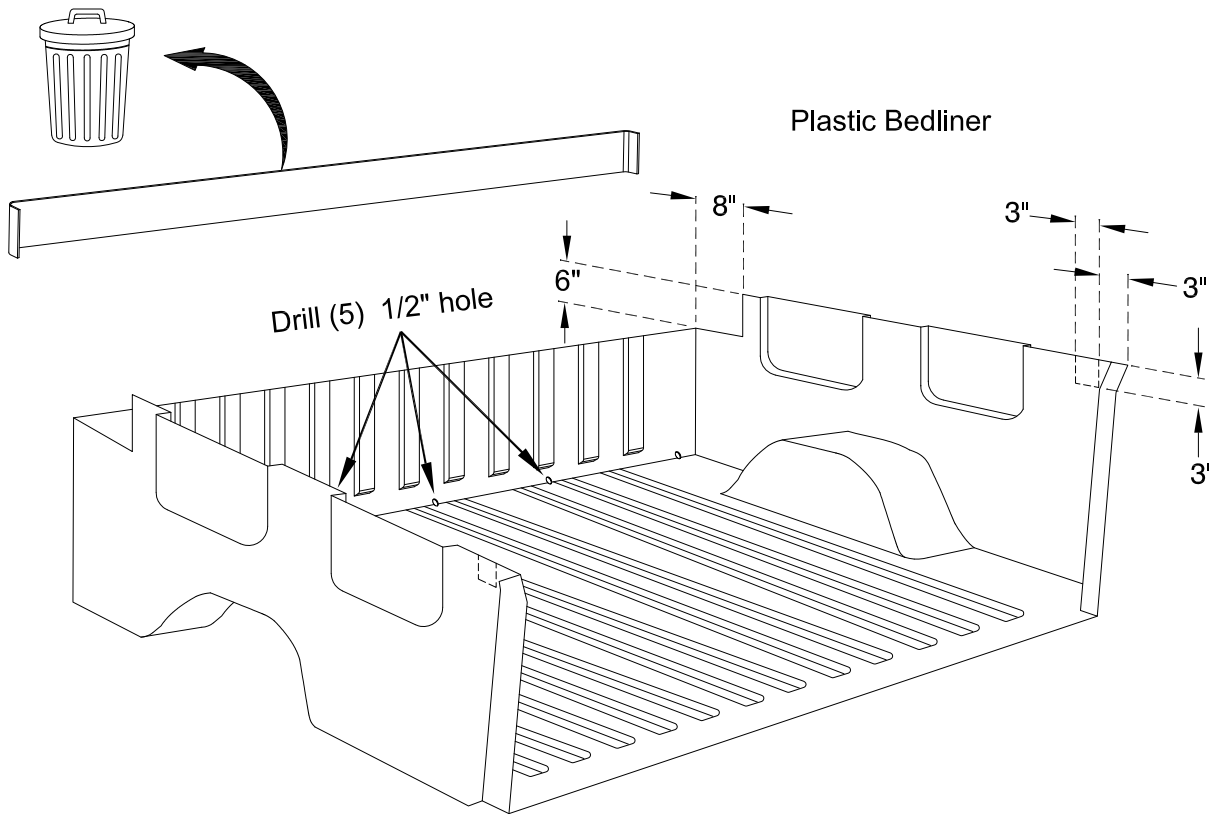


This Tonneau Cover may retract to the full open position very quickly resulting in any objects placed on top of the Tonneau Cover to fall off the Tonneau or become trapped inside of the Tonneau carrier. Do not place ANY objects on top of the Tonneau Cover when attempting to close. Failure to follow the instruction may result in damage to your vehicle, belongings or Tonneau Cover. To avoid injury keep all body parts clear of Tonneau Cover and carrier when opening.

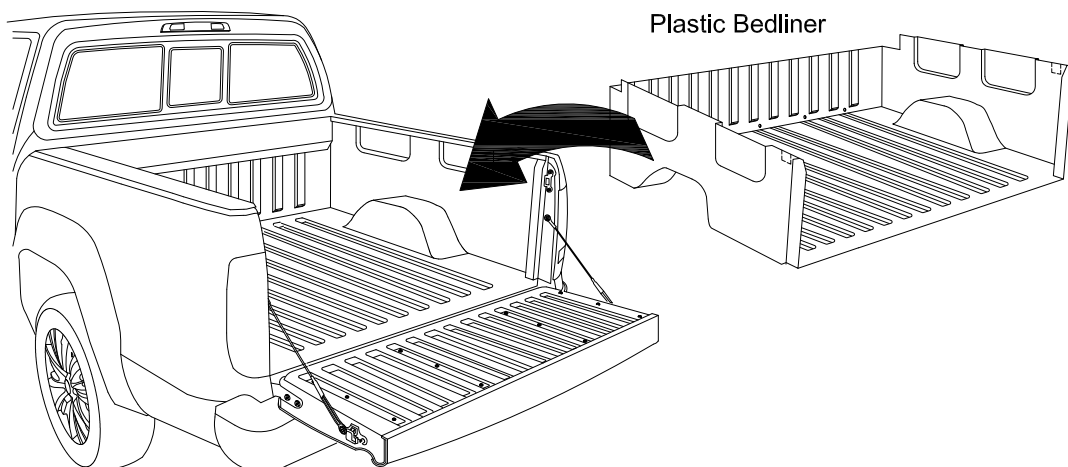
1a If no plastic bedliner present proceed to page 5 - Step 1



1b



1c



1 LHS = RHS

\*optional

X2

1  
 D  
 H  
 I  
 J  
 G

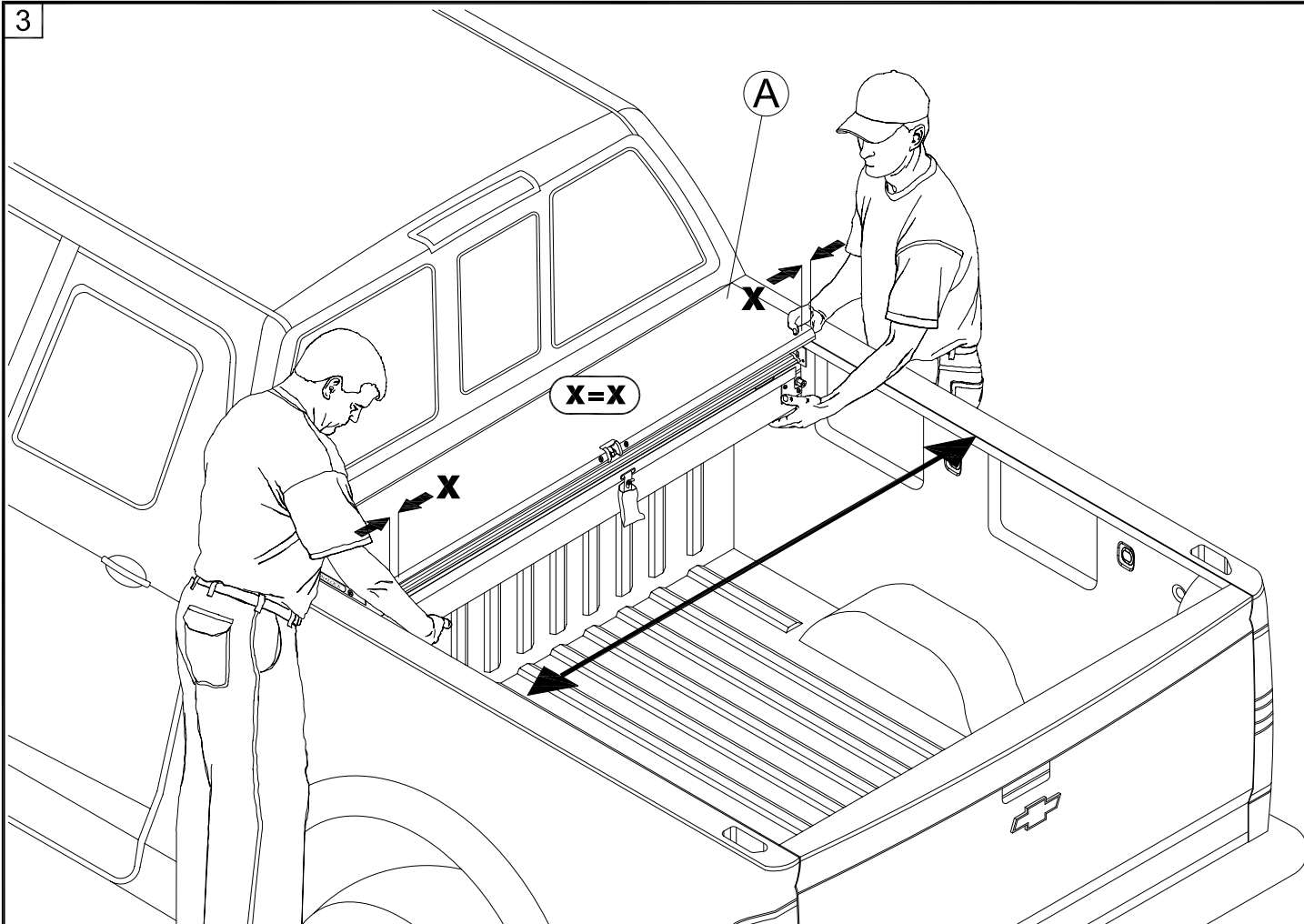
2

3  
 Level

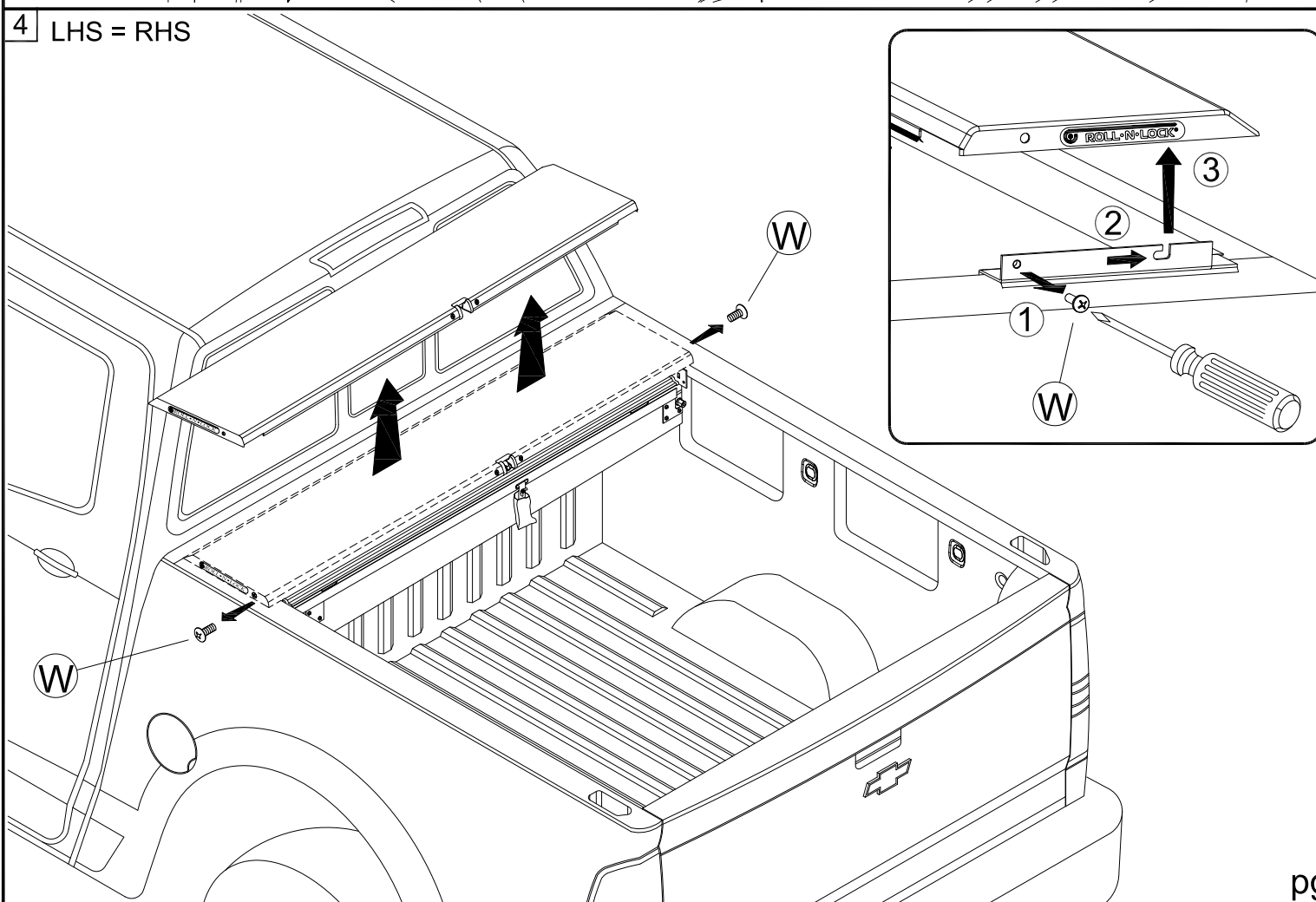
4  
 P

pg 5

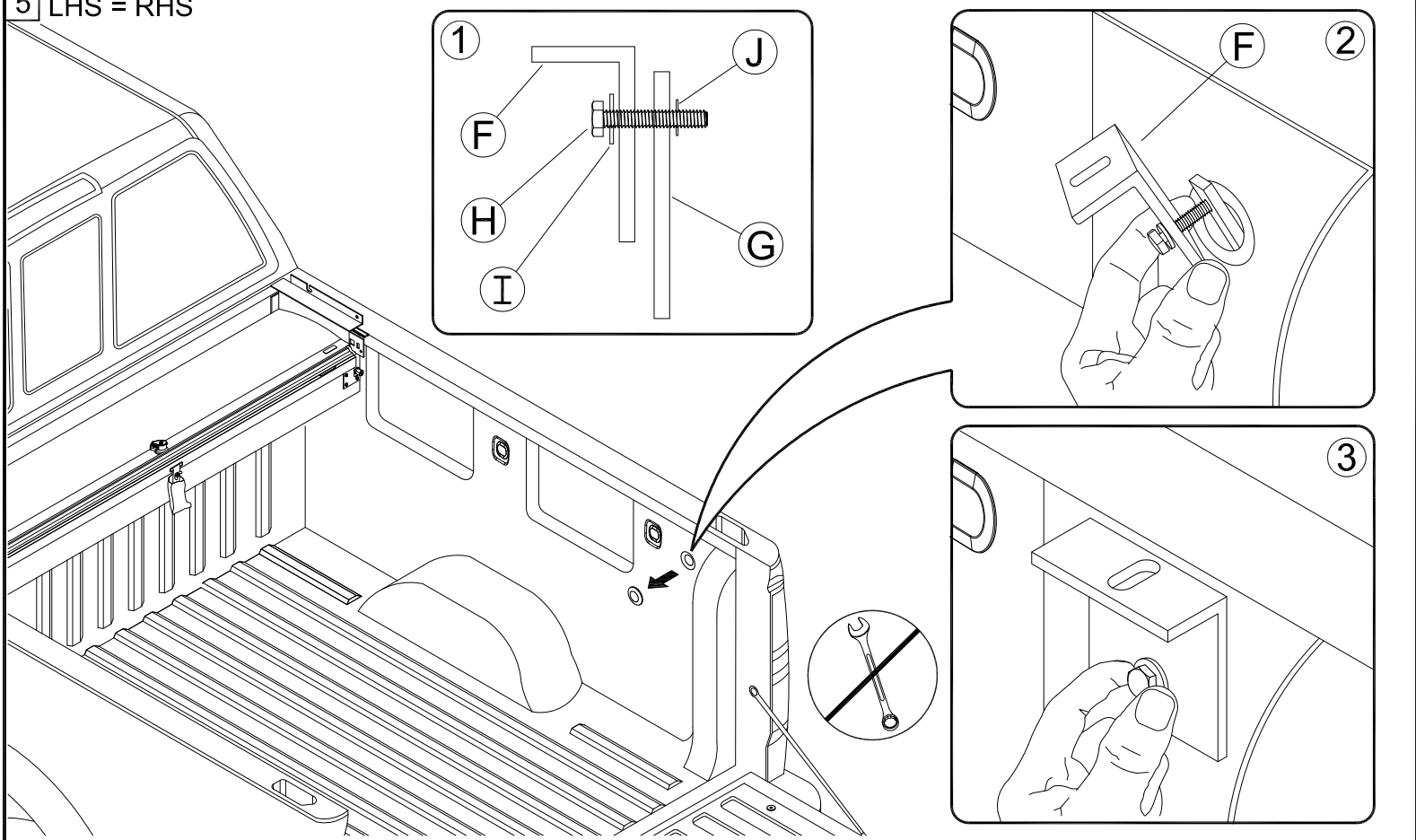
3



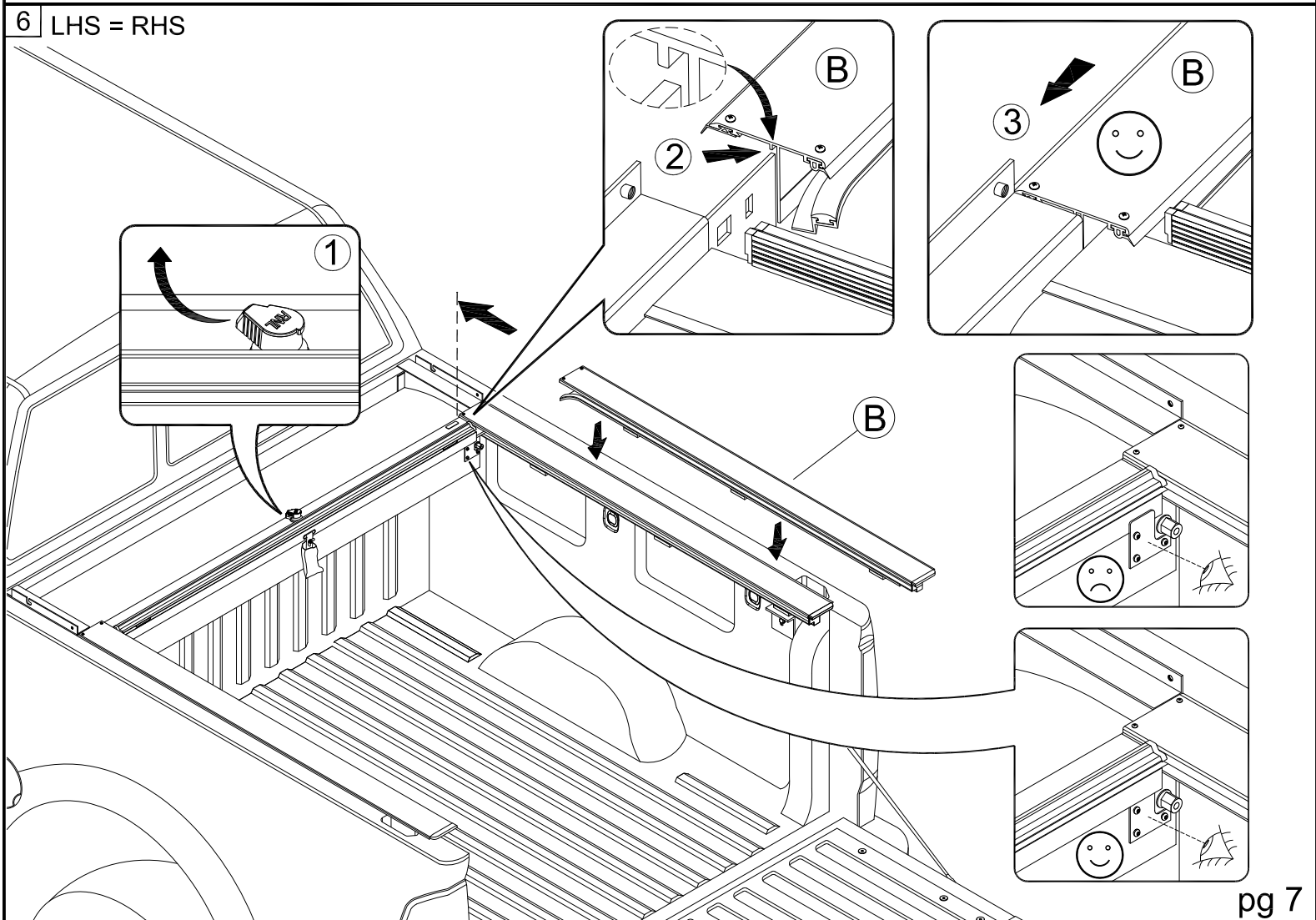
4 LHS = RHS



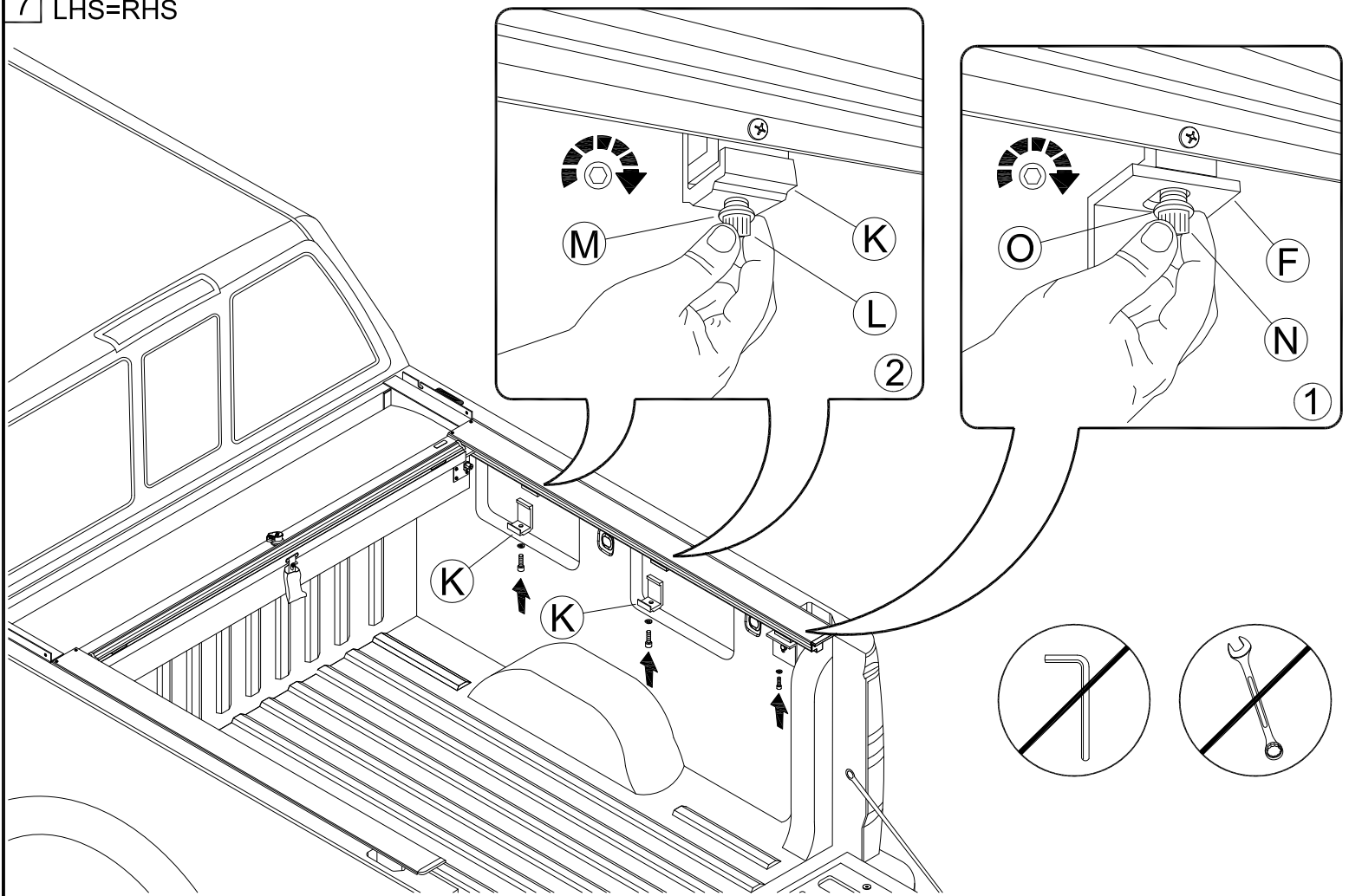
5 LHS = RHS



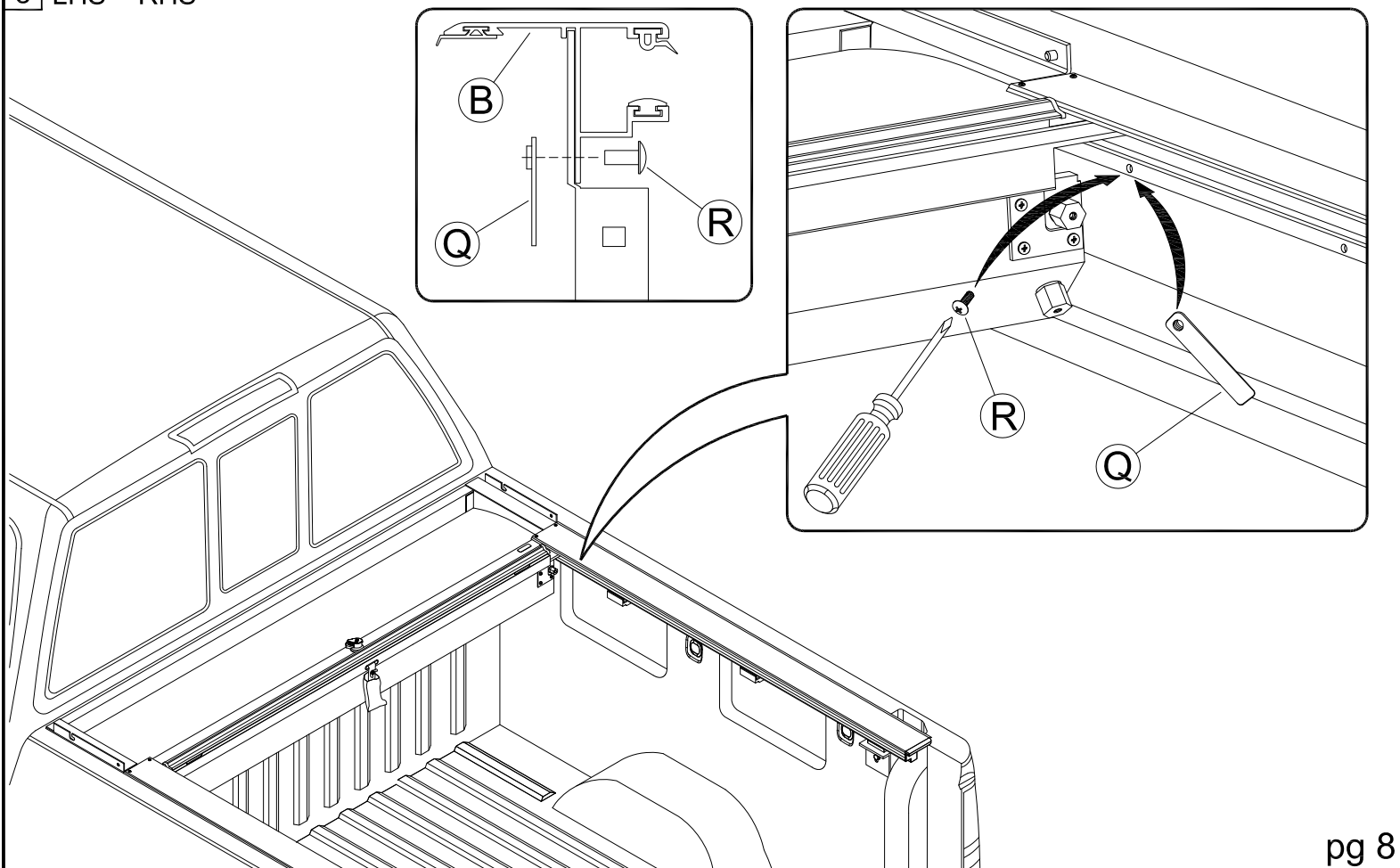
6 LHS = RHS



7 LHS=RHS

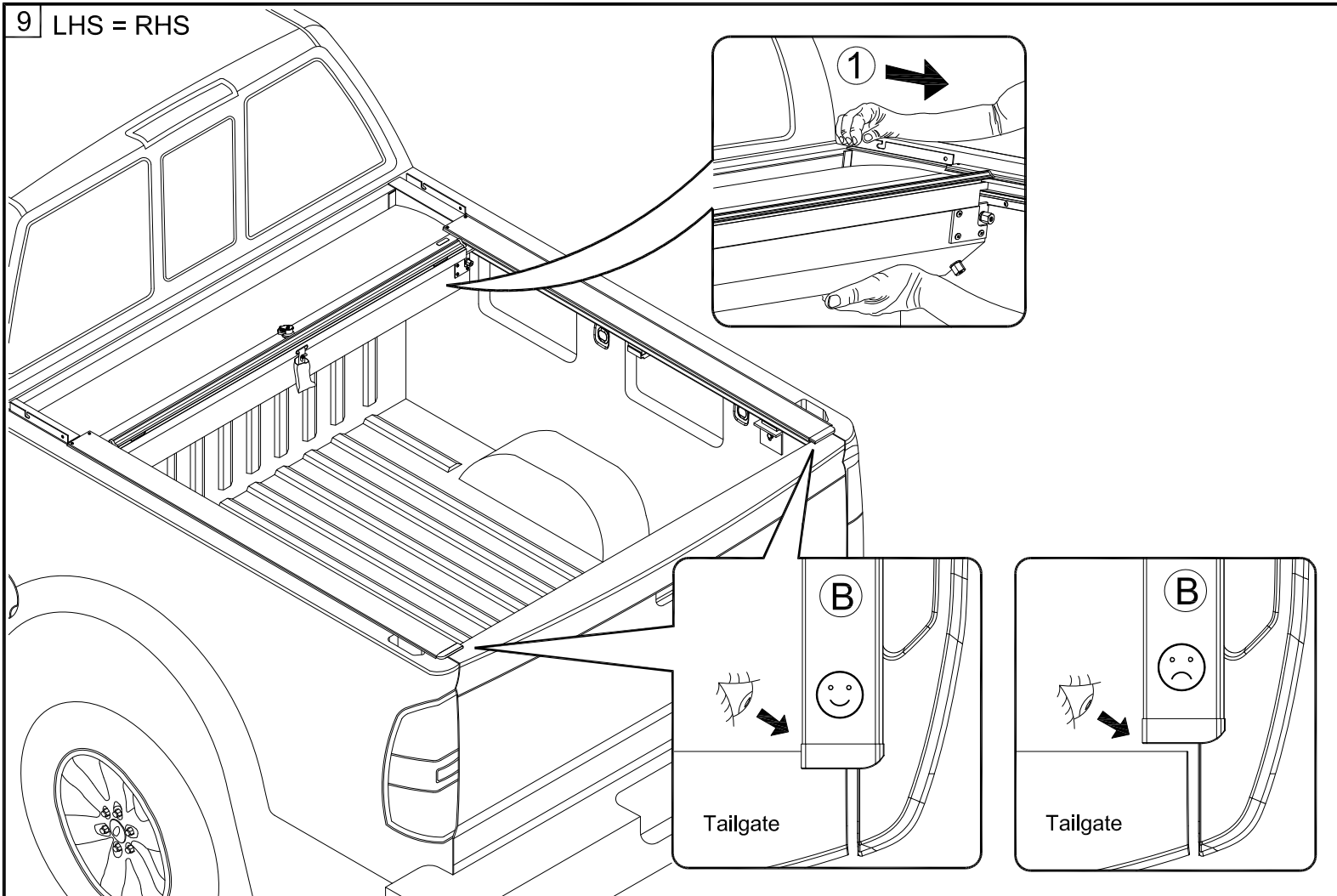


8 LHS = RHS

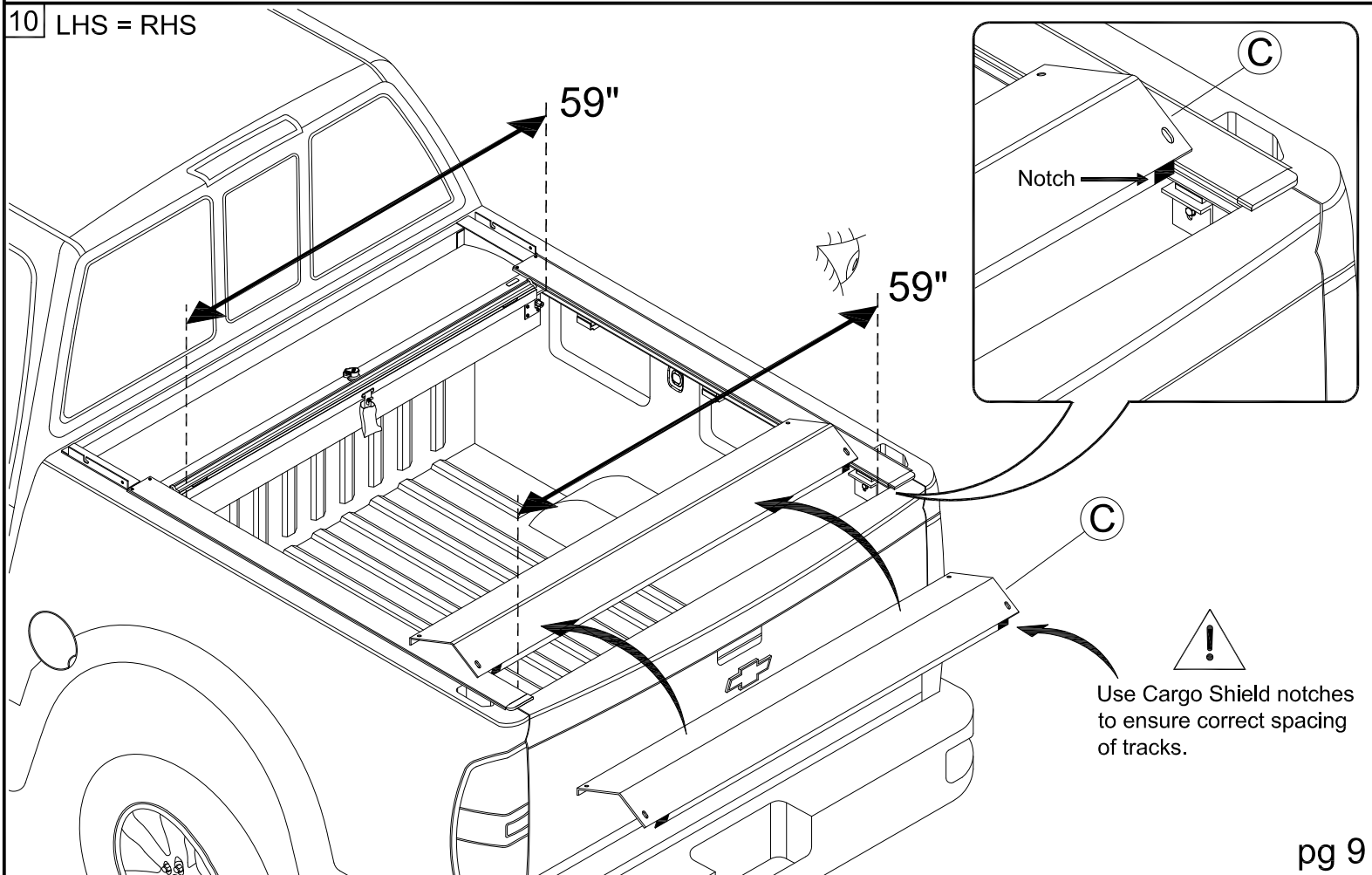




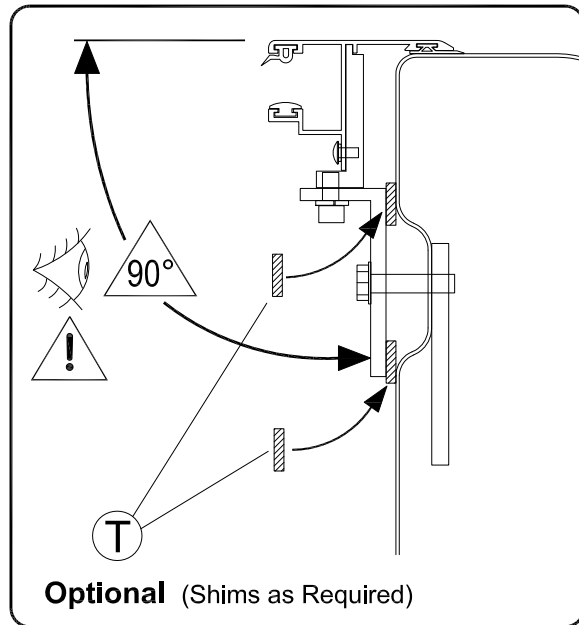
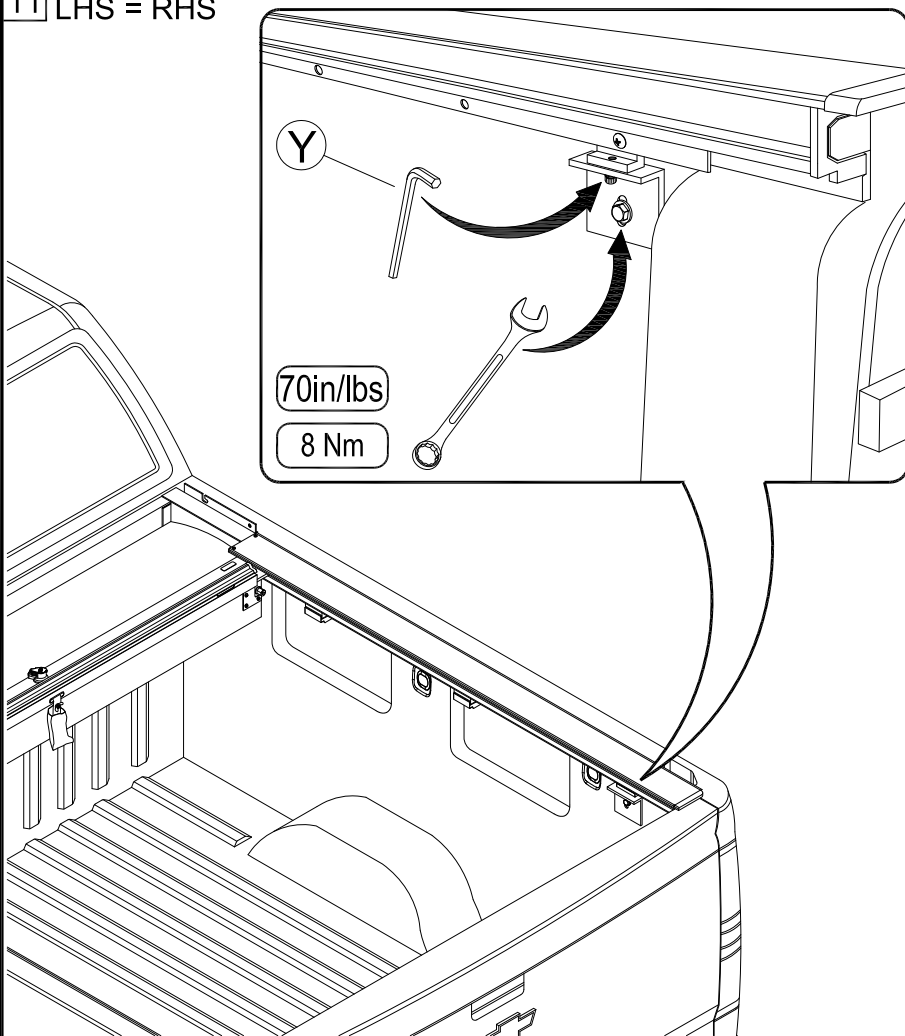
9 LHS = RHS



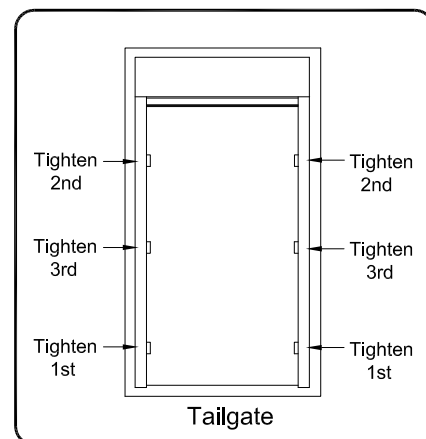
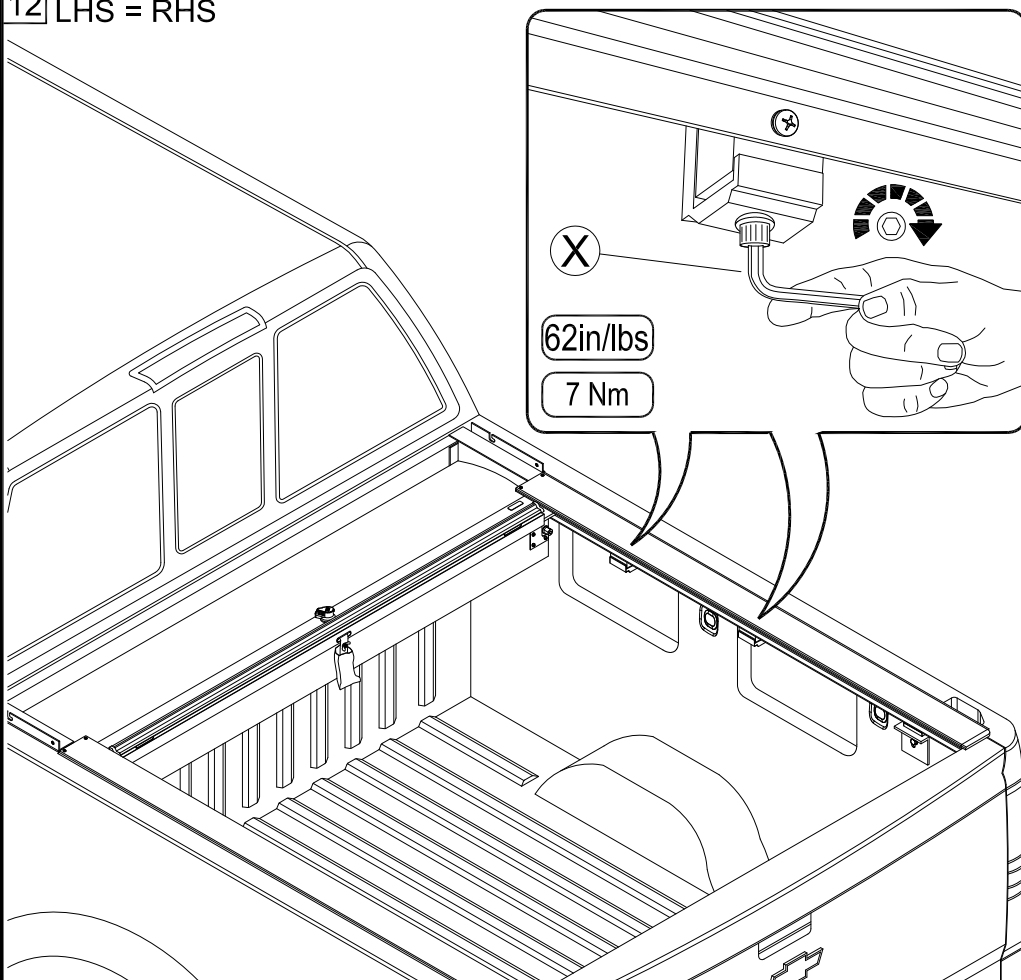
10 LHS = RHS



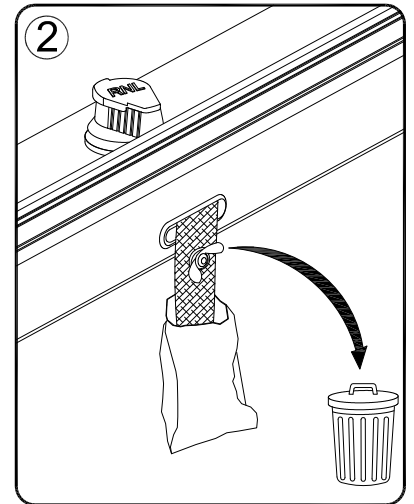
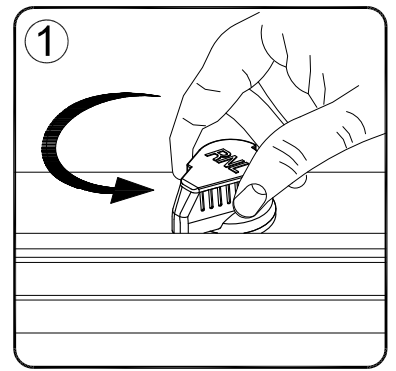
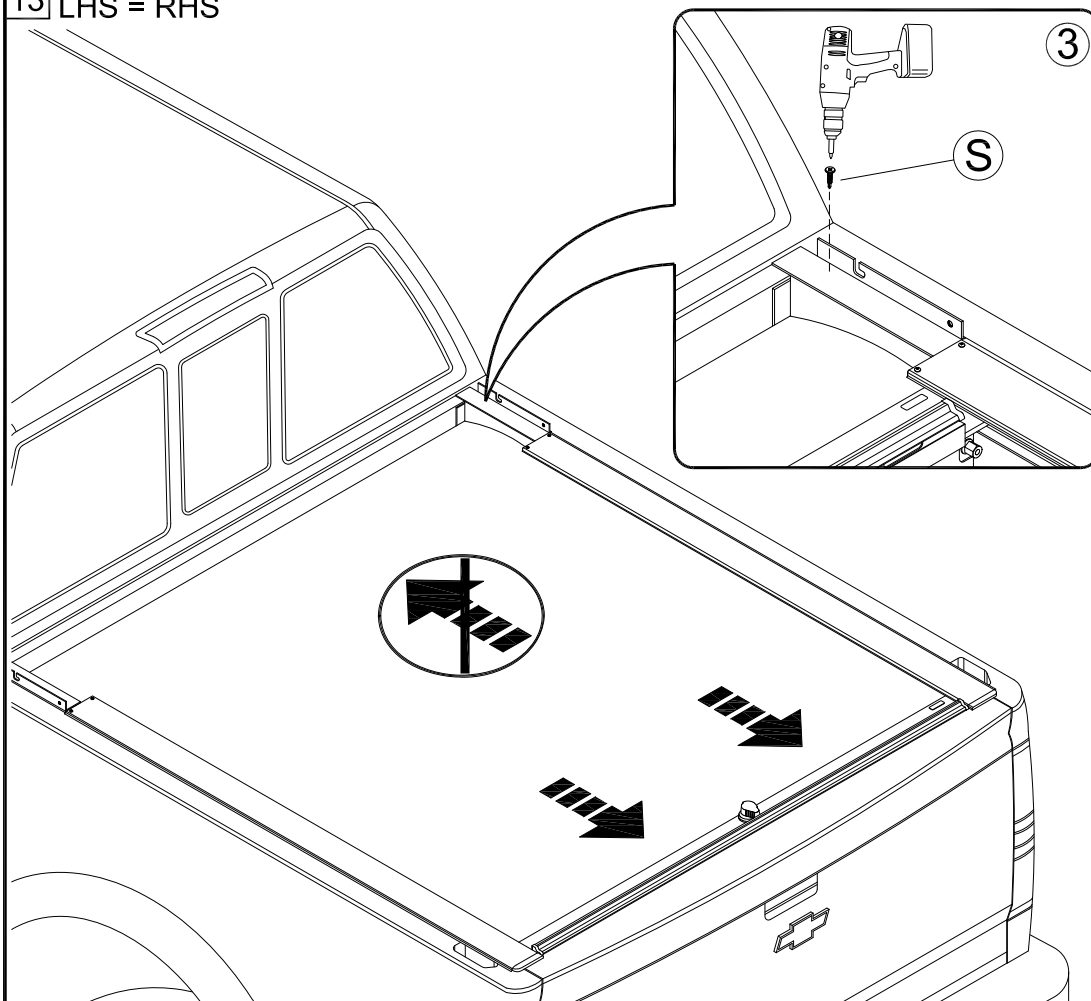
11 LHS = RHS



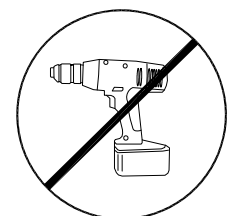
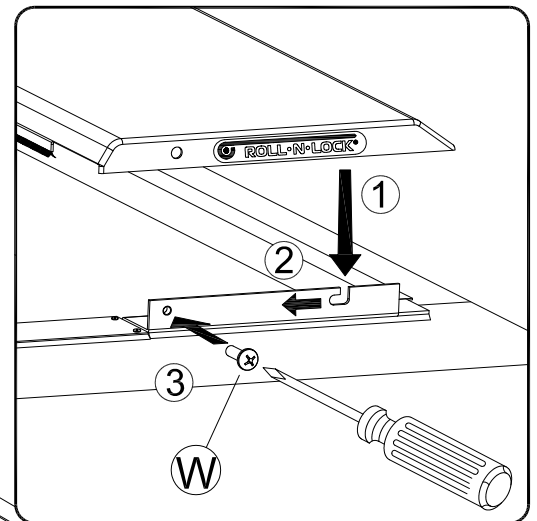
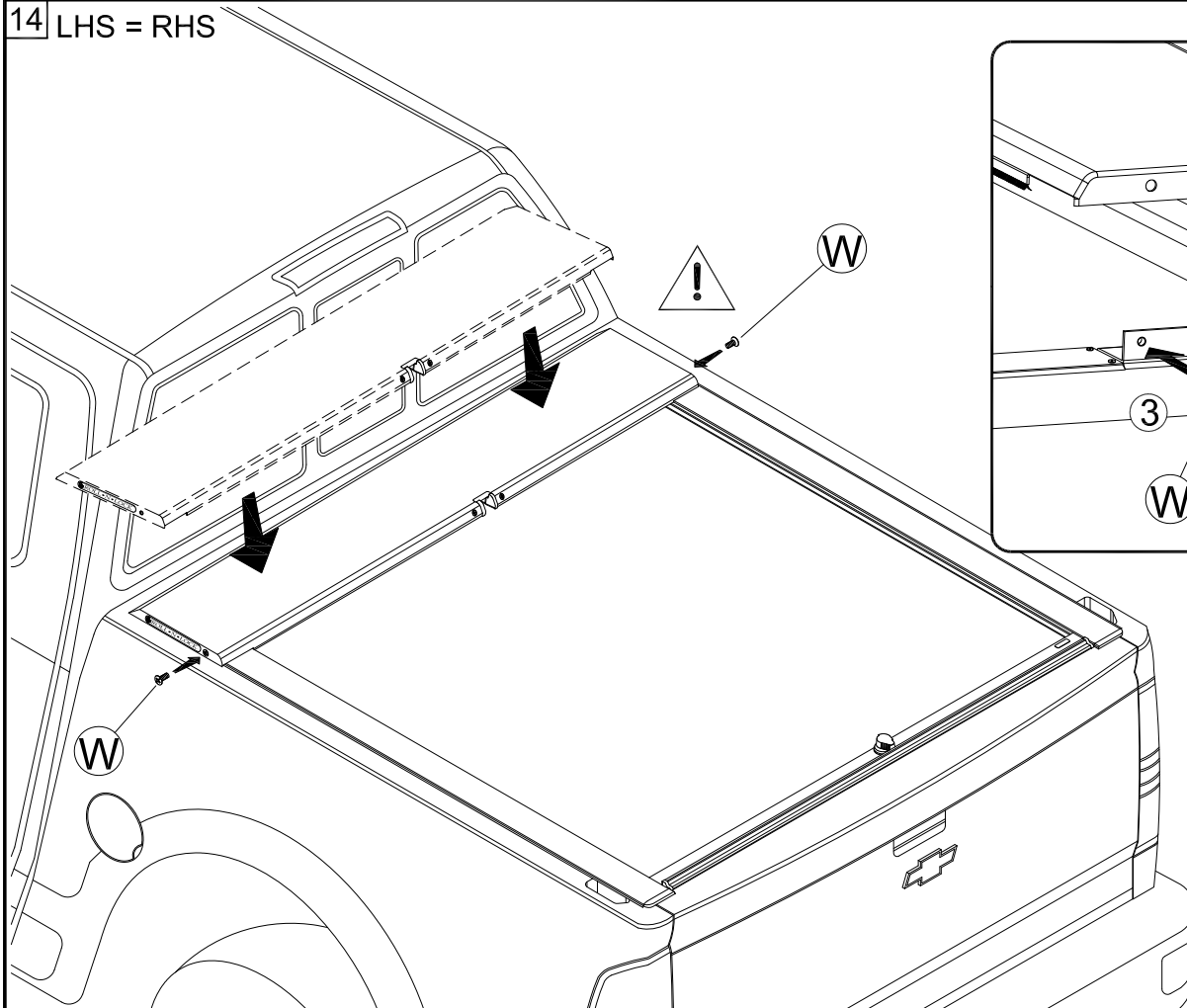
12 LHS = RHS



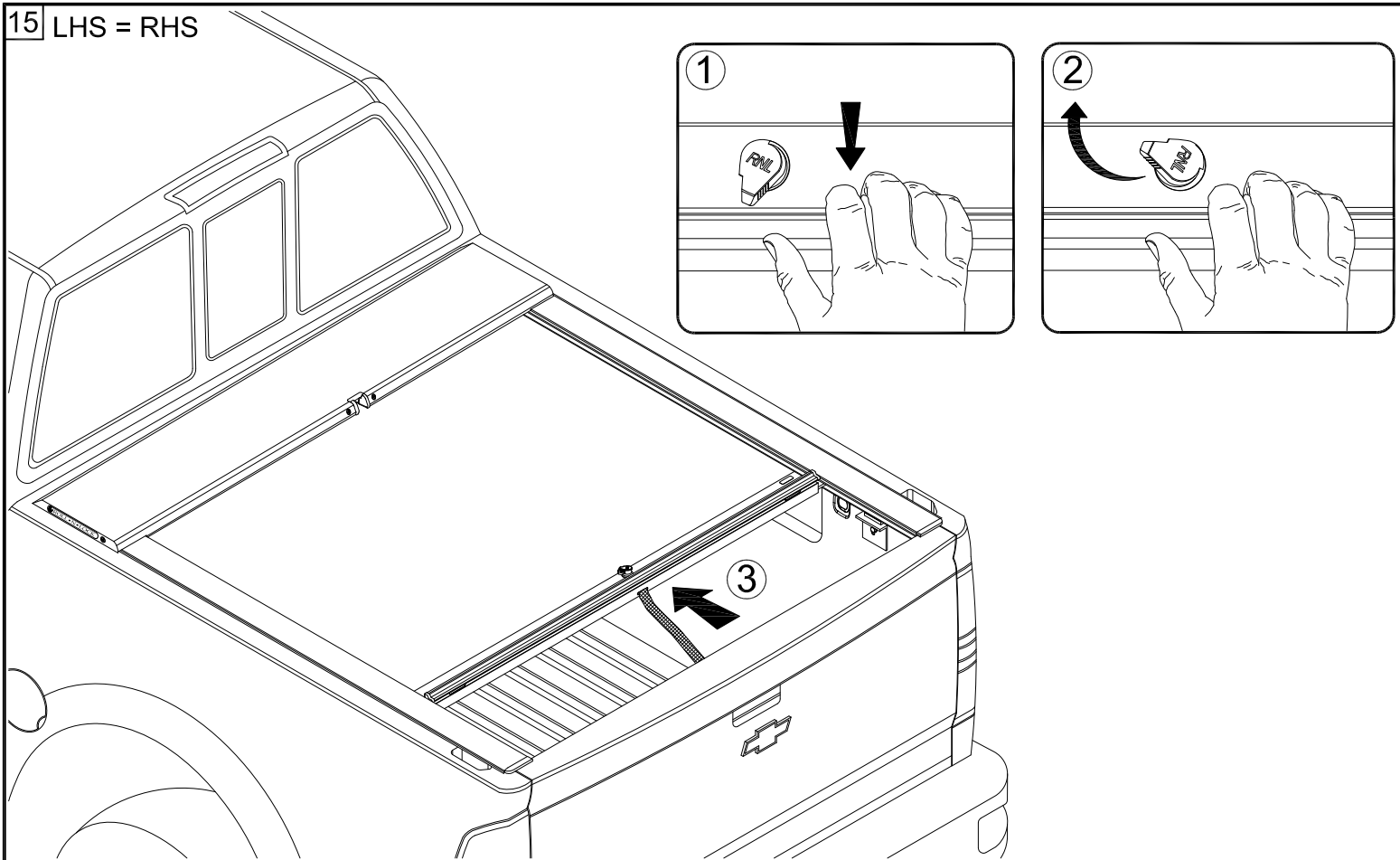
13 LHS = RHS



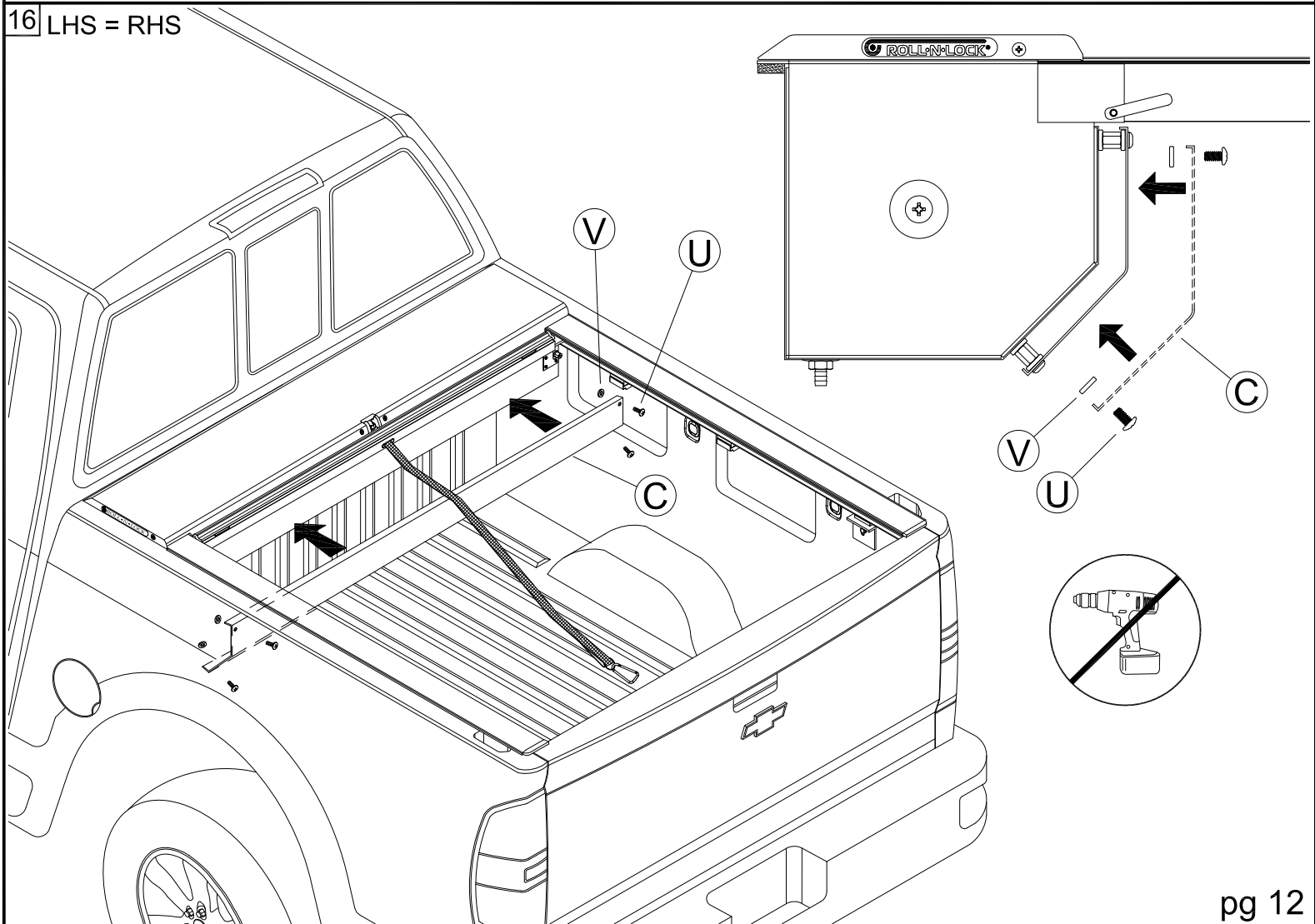
14 LHS = RHS

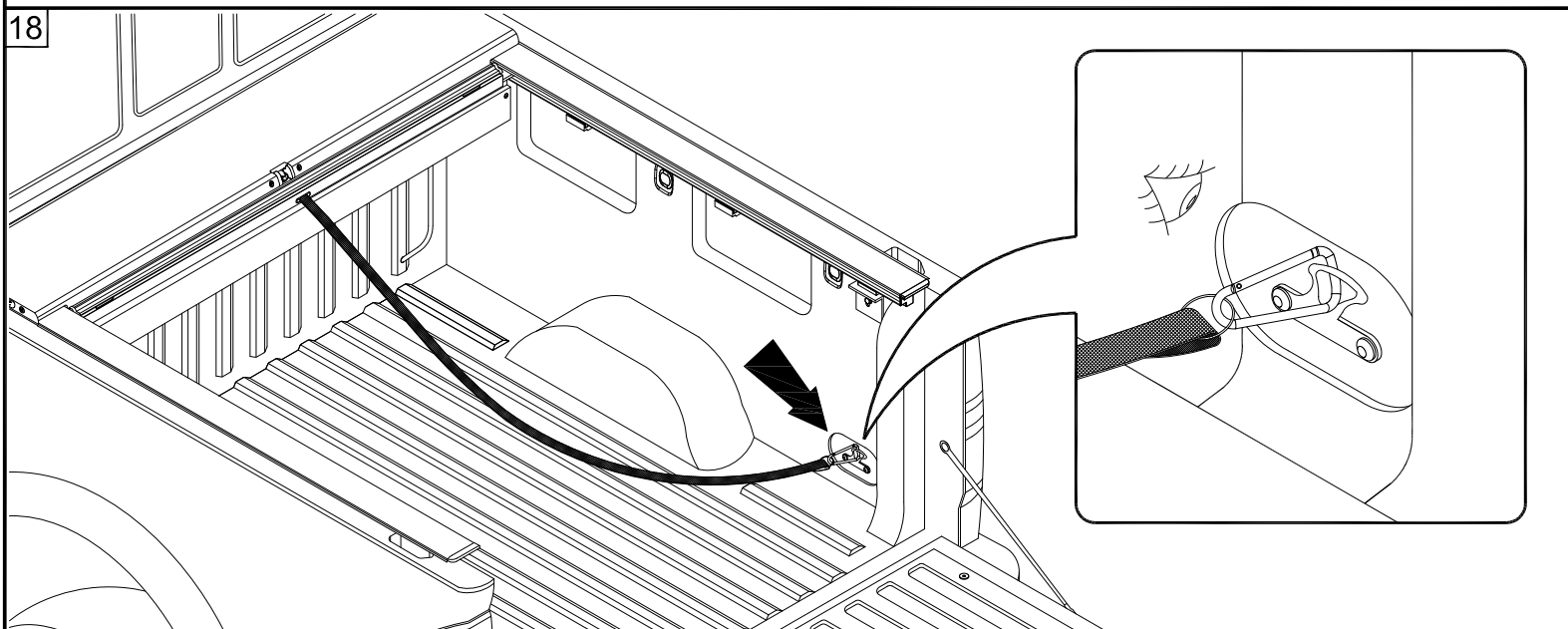
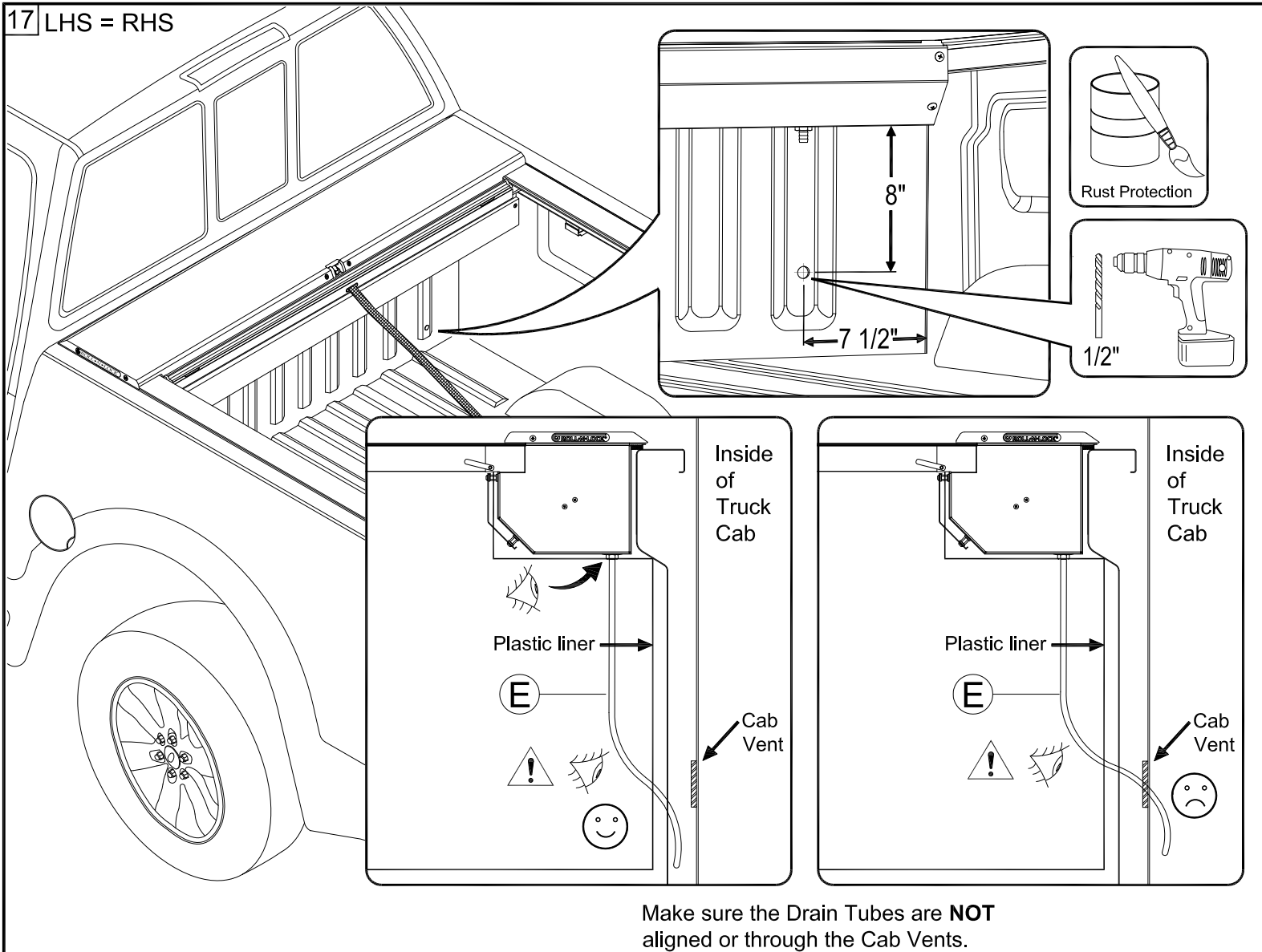


15 LHS = RHS



16 LHS = RHS





**ROLL•N•LOCK®**

Any questions please call Roll•N•Lock  
Customer Service at 800-952-7655 or [rollnlock.com](http://rollnlock.com)