



Installation Instructions

Part No. 5380436

Billet/Plus® Shift Handle

For 2016-2022 Camaro w/Automatic Transmission

Rev 1/20/2022

WORK SAFELY! For maximum safety, perform this installation on a clean, level surface and with the engine turned off. Place blocks or wedges in front of and behind both rear wheels to prevent movement in either direction.

CAUTION: To avoid any possibility of bodily injury or damage to vehicle, do not attempt installation until you are confident that the vehicle is safely secured and will not move.

PARTS



Pistol Grip



Set Screw,
10-32 x 3/8"



6" Zip Tie



Hurst Decals

1. Use a trim removal tool to remove the chrome bezel. Starting at the rear of the bezel, pry straight up to release the locking clips, working your way forward along each side.



2. Raise the bezel high enough to gain access to the plastic ring that secures the shift boot to the shifter.



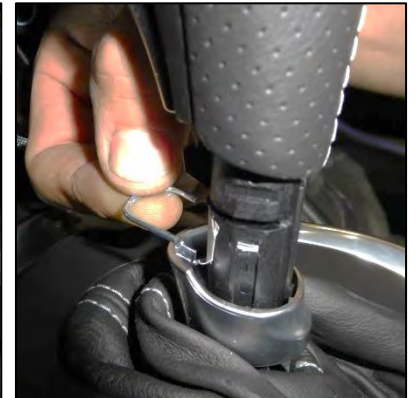
3. Carefully pry open the locking tabs that secure the shift boot to the shifter, then slide the plastic ring down.



4. Use a trim tool to pry down on the chrome ring just below the shift knob.



5. Locate the U-shaped clip that secures the shift knob to the lower stick, and use a screw driver to push it out and remove it.



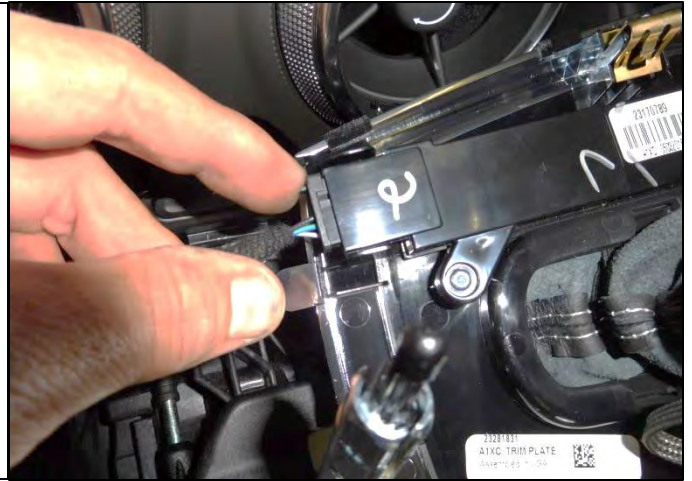
6. Pull straight up to remove the shift knob from the stick.



7. Remove the chrome ring.



8. Disconnect the shift indicator plug from the chrome bezel, and remove the bezel.



9. The plastic ring is glued to the leather boot. Carefully remove the ring to avoid tearing the shift boot.



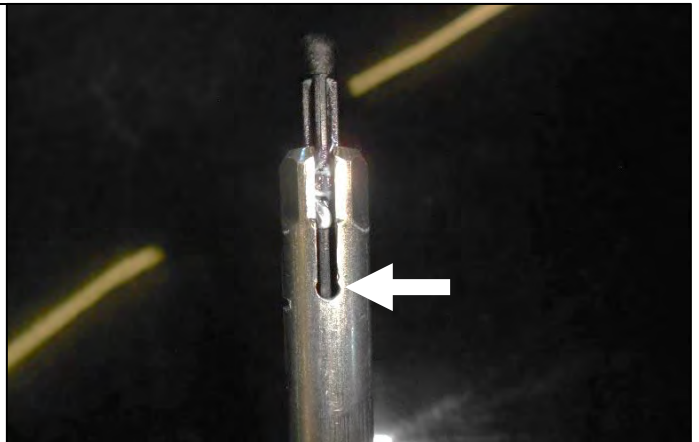
10. Invert the leather boot, and insert the Hurst pistol grip through the boot opening.



11. Identify the machined groove at the bottom of the pistol grip, and zip tie the boot to the pistol grip at the groove. Tighten the zip tie and trim off the tail.



12. Identify the vertical groove along the front of the shifter stick. Note the rounded recess at the bottom of the groove. This is where the pistol grip's set screw will engage the stick.



CAUTION: The transmission may need to be shifted into Neutral to perform the following steps. Before shifting into Neutral, ensure that the engine is turned off, the emergency brake is set, and the front and rear wheels are chocked.

13. Slide the pistol grip and boot assembly down over the stock lower stick.



14. Tighten the set screw until you feel some drag. Then align the pistol grip so that the set screw falls into the rounded recess identified at Step 12, and fully tighten the set screw.

NOTE: If the transmission was shifted into Neutral, shift back into Park after tightening the pistol grip set screw.



15. Reconnect the shift indicator plug, then snap the chrome bezel back into position.



IMPORTANT: RETAIN THESE INSTRUCTIONS FOR FUTURE REFERENCE

