



## Installation Instructions

# 717857

### 2014-19\* GM SILVERADO

### SIERRA 1500 TRUCKS

### 4.3L & 5.3L ENGINE

### 2/4 wheel drive with 143.5" & 153" wheelbase

\*classic body only

Also fits 2019 GM 1500 (Legacy body only) 5.3L

extended cab with 143.5" wheelbase

#### OVERVIEW:

1. Take a moment to read and understand these instructions before installing your Flowmaster performance system.

**NOTE:** Please inventory all parts now before continuing and if necessary, report any missing items to our tech line. This will avoid potentially stranding your vehicle until any missing replacement parts arrive.

ITM #	PART #	DESCRIPTION	QTY.
1	26755M	Inlet Pipe Assembly	1
2	TB700M	Extension Pipe	1
3	71249-Z	Muffler	1
4	26756M	Tailpipe Assembly	1
5	ST509B	Tips	1
N/A	PK978	Hardware Packages includes:	1
6	MC300BS	3" Stainless Band Clamp	3
7	HW503	½" Hanger Keeper	4

#### REMOVE STOCK EXHAUST SYSTEM:

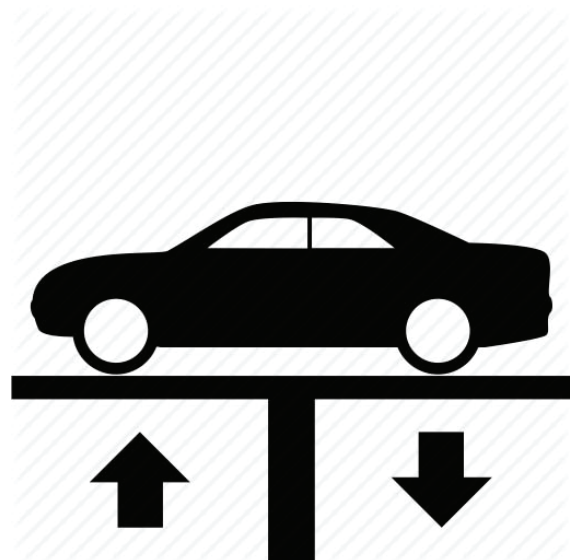
2. Raise vehicle up on a hoist or rack to working height. If you don't have access to a hoist or rack, support vehicle with jack stands.

**WARNING:**

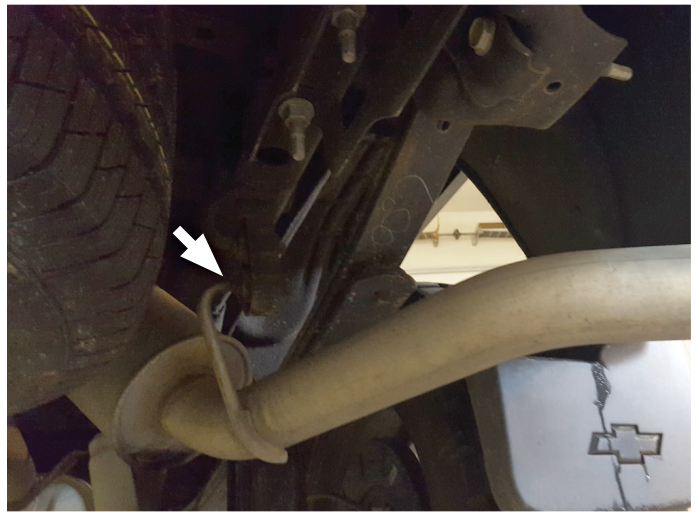
Avoid serious burns! Allow your vehicle time to cool completely before touching any factory engine components.

**To ease preparation and installation of your new kit:**

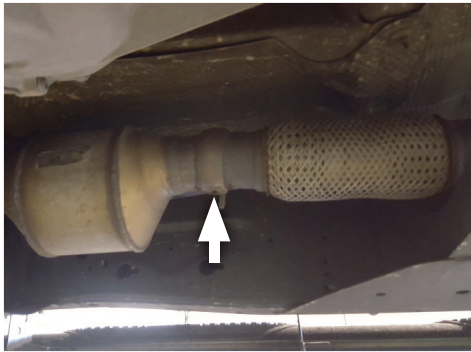
- Apply penetrating lubricant to mounts, bolts and clamps before you remove them.
- Use stands as necessary to support parts as you detach them from your vehicle and again as you install new parts.



3. Cut tailpipe just behind muffler, disassemble wire hangers (x3) from their isolators and remove tailpipe.



4. Loosen clamp, disconnect inlet pipe at catalytic converter then remove wire hanger from isolator to remove exhaust system completely from vehicle.



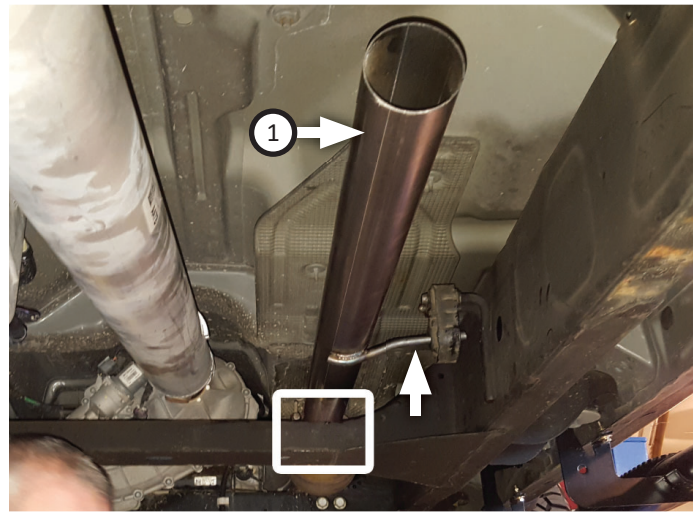
## INSTALL FLOWMASTER EXHAUST SYSTEM

5. Remove nuts from stock and Flowmaster clamps, apply anti-seize compound to bolts and re-install nuts.

**NOTE:** The image in this step is intended for illustrative purposes only and may or may not accurately reflect components included in your kit.

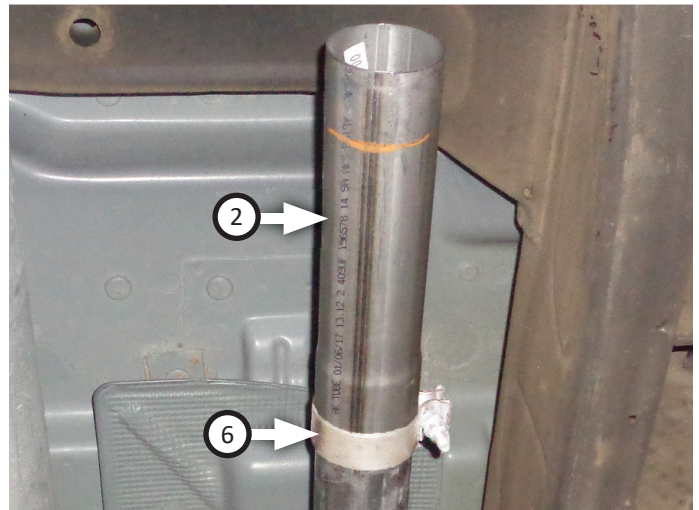


6. Transfer clamp from factory system onto **inlet pipe (1)** then connect it to catalytic converter. Mount wire hanger into factory isolator and tighten clamp just enough to allow for adjustment.

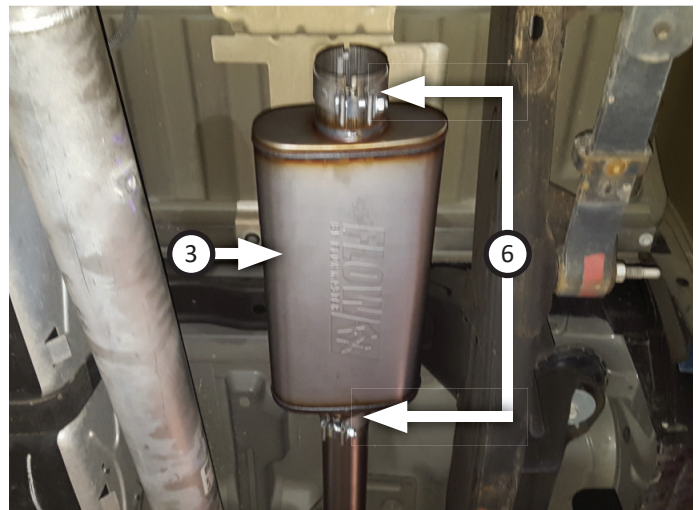


WHEEL BASE	BODY STYLE	BED LENGTH	INLET ASSY:
143½"	Extended Cab	6'6"	Don't install extension
143½"	Crew Cab	5'8"	Don't install extension
153"	Crew Cab	6'6"	Install extension

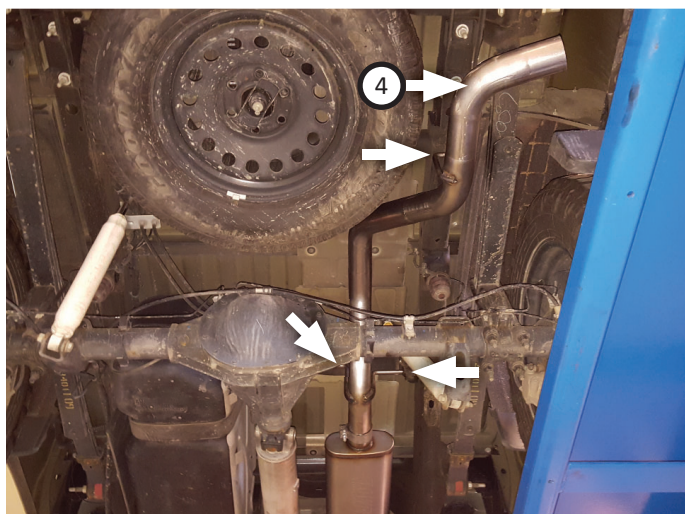
7. For applicable builds, place **clamp (6)** onto **extension pipe (2)** then connect extension to inlet assembly.



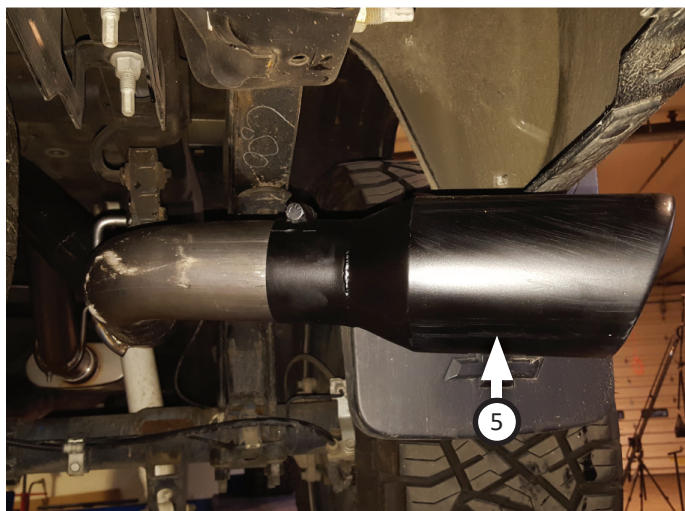
8. Place (x2) **clamps (6)** onto **muffler (3)** and connect it to inlet pipe. Tighten clamp just enough to allow for adjustment.



9. Route **tailpipe assembly (4)** over axle and connect it to muffler outlet. Mount wire hangers into isolators (x3) then tighten clamp enough to allow for adjustment.



10. Place **tip (5)** onto exit pipe and tighten inlet. Rotate exit pipe and tip to desired distance from body or bumper, so angle cut on tips are properly positioned.
11. Adjust exhaust components for fit; maintaining 1/2" clearance and compensating for suspension, travel and vibration, then tighten all clamps. Finally, fit (x4) **hanger keepers (7)** onto each sideways hanger.
12. Recommended: Secure slip-fit connections with a 1-inch tack weld then spray high-temp paint over each weld to prevent rust and premature corrosion.



Congratulations, the installation of your FLOWMASTER performance exhaust system is now complete!





Installation Diagram  
**717857**  
**2014-19\* GM SILVERADO**  
**SIERRA 1500 TRUCKS**  
**4.3L & 5.3L ENGINE**

**2/4 wheel drive with 143.5" & 153" wheelbase**

\*Classic body only

Also fits 2019 GM 1500 (Legacy body only) 5.3L  
extended cab with 143.5" wheelbase

