



4095, Stainless Steel

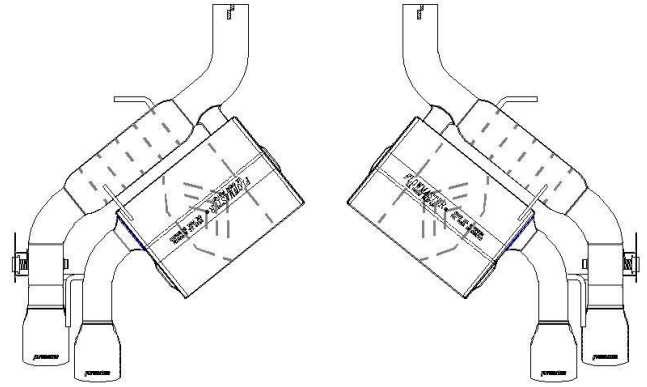
Installation Instructions for:
817746

2016-2019 CAMARO SS

6.2L · V8 ENGINE

Fits Hard-Top and Convertible Models
With Dual Mode Exhaust NPP.

PACKING LIST		
Qty	Description	Part#
1	Right Muffler Assembly.	8430441-433
1	Left Muffler Assembly.	8430441-434
1	Hardware Pack	PK821
2	2 3/4" Clamp	MC234BS
2	7/16" Hanger Keepers	HW502



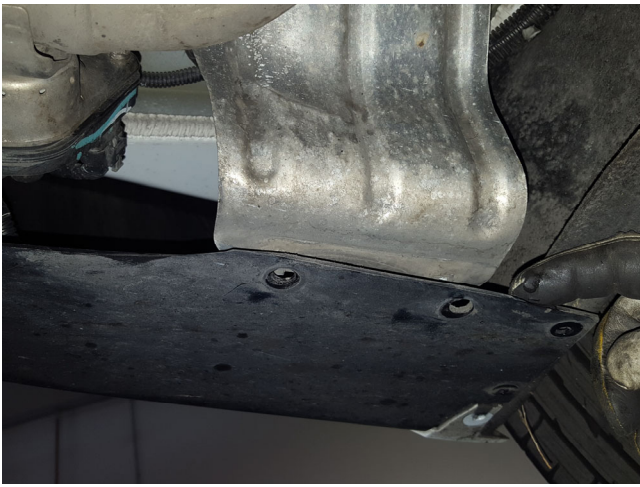
Removal:

4/1/19

- 1) Raise vehicle and support securely with stands. To ease removal of stock system, spray a penetrating lubricant onto rubber hangers just behind rear differential and at rear of vehicle.



- 2) Begin by measuring back 1-1/2" from rear of suspension cross-member (as shown) and make a mark on both pipes. Support exhaust system; both in front and behind area to be cut. Once you've double checked measurements, cut both pipes at their marks. **Note: Use caution when cutting!**



3) Behind each rear tire, remove screws (x2 ea.) attaching lower cover to frame. Unplug electrical connection from actuators then dismount both front wire hangers on muffler from rubber isolators.



4) **Use stands to support muffler as you complete this step:**

To disassemble muffler from vehicle, remove nuts (x2 ea.) securing muffler/pipe hangers (x2) to frame. This will drop factory exhaust system out of vehicle. Now place factory next to Flowmaster muffler assemblies.

Installation:



1) Remove bolts (x3) securing exhaust actuators to factory muffler assembly. Place them onto mounts on new Flowmaster units then fasten them by re-using bolts (x3).



2) Slide 2- $\frac{3}{4}$ " clamp onto factory inlet pipes, then place right muffler assembly **#8430441-433** into position and slide inlet onto factory pipe (approximately 2.50" to 3.00"). Support assembly with stand and remount rear hanger mount to frame and tighten securely. Connect hanger on front of muffler to rubber mount on vehicle. Leave clamp on inlet loose for now. Repeat this step with muffler assembly **#8430441-434** on left side of vehicle. Reconnect electrical connection to exhaust actuators on either side of vehicle.



3) Adjust and level muffler assemblies to provide a satisfactory fit. They can also be adjusted forward or back to get desired position in rear cut-outs. Maintain a minimum of 1/2" clearance around all components; keeping suspension travel and vibration in mind. After adjustments have been made to your satisfaction, securely tighten both muffler inlet clamps.

4) For a more secure installation, we highly recommend placing a minimum 1" weld on either side of the inlet slip-fit connections. Place included 7/16" hanger keepers onto wire hanger ends at each mount to prevent components from slipping. Congratulations; installation of your Flowmaster performance exhaust system is now complete!