



Installation Instructions

**817751**

**2016-2019 CAMARO LS, LT  
2.0L ENGINE  
COUPE & CONVERTIBLE**

**OVERVIEW:**

1. Please take a moment to read and understand these instructions before installing your Flowmaster performance system.

NOTE: Please inventory all parts before starting the installation process and call our tech line to report any missing parts. This will help avoid potentially stranding your vehicle until any missing replacement parts arrive.

ITM #	PART #	DESCRIPTION	QTY.
1	815425-437	Right Muffler Assembly	1
2	815425-438	Left Muffler Assembly	1
N/A	PK822	Hardware Pack includes:	1
3	MC225BS	2¼" Stainless Band Clamp	2
4	HW502	¾" Hanger Keeper	2

**REMOVE STOCK EXHAUST SYSTEM:**

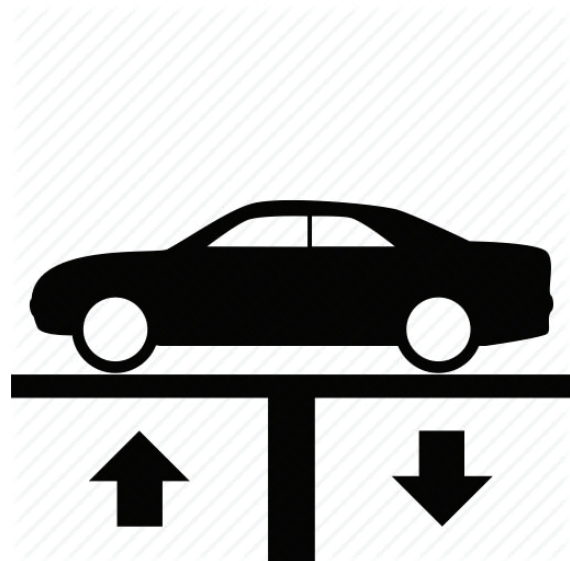
2. Raise vehicle up on a hoist or rack to working height. If you don't have access to a hoist or rack, support vehicle with jack stands.

**WARNING:**

Avoid serious burns! Allow your vehicle time to cool completely before touching any factory engine components.

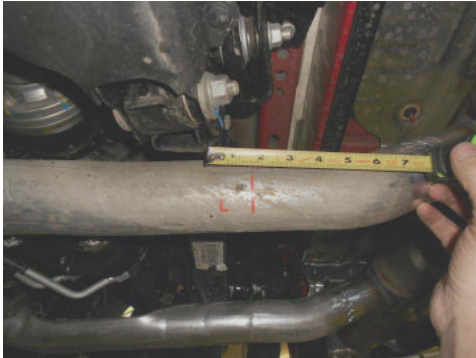
**To ease disassembly of factory components:**

- Apply penetrating lubricant to mounts, bolts and clamps before you remove them.
- Use stands as necessary to support parts as you detach them from your vehicle.



**WARNING:** When cutting pipes, be very careful not to cut any components near them.

3. Measure back and mark both pipes, 1½" from rear of suspension cross-member. Cut pipes at marks.



4. Remove hangers (x2) at front of muffler from isolators on vehicle. With help, slide system forward and out of rear hanger mounts. Lower system to floor with front hangers attached.



5. Carefully deburr factory pipes at cut ends. Remove hanger mounts at rear of vehicle from vehicle frame and transfer them from factory system to corresponding side on Flowmaster system.



## INSTALL FLOWMASTER EXHAUST SYSTEM

- Remove nuts from stock and Flowmaster clamps, apply anti-seize compound to bolts and re-install nuts.

**NOTE:** The image in this step is intended for illustrative purposes only and may or may not accurately reflect components included in your kit.



**NOTE:** Slide slip-fit of mufflers approximately 2½" to 3" over factory pipe as you connect them for proper fitment.

- Place **clamp (3)** onto **right muffler assembly (1)** then connect it to cut pipe and support it. Re-install rear hanger mount to frame and hang wire hanger in mount. Repeat with **left muffler assembly (2)** on left side.
- Adjust and level mufflers for a satisfactory fit. Maintain a minimum of ½" clearance around all components of exhaust system, keeping in mind suspension, travel and vibration. After making any required adjustments, securely tighten all clamps.



- Slide **hanger keepers (4) (x2)** onto each sideways hanger to secure exhaust system in place.
- We recommend applying a one inch tack weld to all slip-fit connections for a more secure installation. You may also apply high temperature paint over welded areas to prevent rust and premature corrosion.

Congratulations, the installation of your FLOWMASTER performance exhaust system is now complete!





Installation Diagram  
**817751**  
2016-2019 CAMARO LS, LT  
2.0L ENGINE  
COUPE & CONVERTIBLE

