

**2010 - 2015 Camaro V6**  
**MRT Version 1 Axle-Back Performance Exhaust System**

Part No. 91A176

**Exhaust Warranty Information**

**IMPORTANT** – The warranty on this product is VOID if the product is not properly installed, or has been modified or altered in any way. If you believe that modification will be required to fit an MRT Exhaust System on your vehicle, **please contact** MRT for assistance **BEFORE** making any modifications to the system.



**Verify that all of the following components are included in kit before beginning installation:**



**Part #1** – Driver Side Axle-Back

**Part #2** – Passenger Side Axle-Back

**SUPPLIED HARDWARE**

**(2)** – 2 ¼" Band Clamps

**REQUIRED TOOLS**

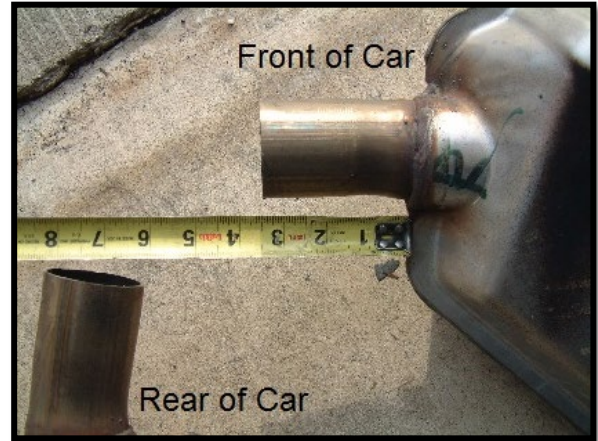
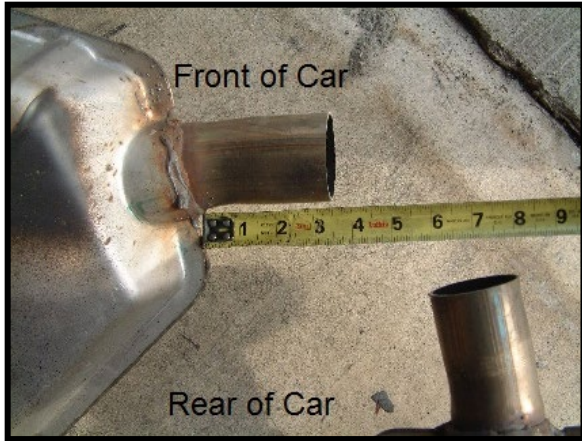
Sawz All Or Cutting Tool  
14mm Deep Socket

Ratchet  
15mm Deep Socket

## Begin with removing factory exhaust system:

**Note:** To install this exhaust system the stock exhaust system must be cut in two places to remove it from the vehicle.

**Step #1:** Cut current exhaust system 2 ¾" from muffler left and right side (see pictures below)



**Step #2:** Remove stock mufflers and remove burr or rough metal from edge of the stock exhaust tube.

**Step #3:** Remove stock muffler hangers.

## Installation steps for the MRT Axle-Back Exhaust System:

**Step #1:** Slide band clamp on to tail pipe and slide the new mufflers into position over the stock exhaust pipe.

**Step #2:** Insert stock hanger into new exhaust and align the tip to rear fascia opening.

**Step #3:** Position clamp to the edge of MRT exhaust. Clamp should extend approximately 1/8 inch past end of axle back tube. Tighten clamp while maintaining tip alignment.

**Note:** Exhaust tip position can be adjusted by manipulating each assembly connection point in/out and rotating the tubing throughout the system.

**MRT appreciates your business; please feel free to contact us at any point with questions or concerns at**

**734-455-5807 or via email at [Sales@MRT-Direct.com](mailto:Sales@MRT-Direct.com)**