

ACS 4Teen Hood Insert Installation Instructions

Pn 33-4-171, 33-4-173 & 33-4-175

Packing list

- 1 - ACS TLE Insert 46-4-011 OR GM 2014 SS Insert
- 1 - ACS 4Teen Water Tray
- 1 - Outer Hood Trimming Template
- 1 - Hood liner Trimming Template
- 6 - M6 Nut with Mounted Washer
- TLE Specific
 - 2 -spring washers for M6
 - 1 – Rivet Short



ACS 4Teen Hood Insert Installation Instructions Pn 33-4-171, 33-4-173 & 33-4-175

Tool List for Install

1. Masking Tape
2. Push Pin Removal Fork
3. ¼", 3/8" ' Drill Bit
4. Drill Punch
5. Drill Motor
6. Saw with Metal Blade, Metal Cutter, or Dremel like cutting tool with metal cutting bit
7. Utility Knife
8. Metal file and sandpaper
9. Ruler or measuring tape
10. Eye Protection and working gloves
11. Black or White Marker
12. 10 and 13 mm Deep Socket Kit

Note 2: ACS 4Teen Hood Ports are designed to fit a 2010-13 Camaro, and 2014-15 Camaro V6, 5th generation excluding ZL1 Versions. Insert installation should be performed by a trained technician.

1. Hood Removal

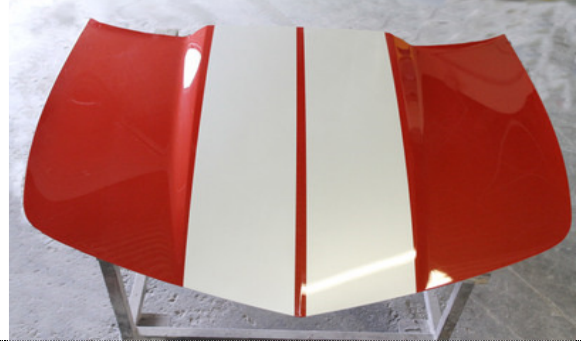
- a. Open hood and disconnect the windshield washer nozzle hose located near the driver's side hinge. Crimp the connector to release the union.
- b. Remove the hood strut from the hood using a small flat head screw driver to pry the C spring.
- c. With the help of an assistant loosen the 4 – 13 mm nuts in the hinge base and remove the hood.



ACS 4Teen Hood Insert Installation Instructions

Pn 33-4-171, 33-4-173 & 33-4-175

2. It is best to work on a large workbench or a set of padded workshop horse. Make sure to protect all metal surfaces to prevent damaging the hood's paint. Workbench should be supporting the weight of the hood and its curvature.



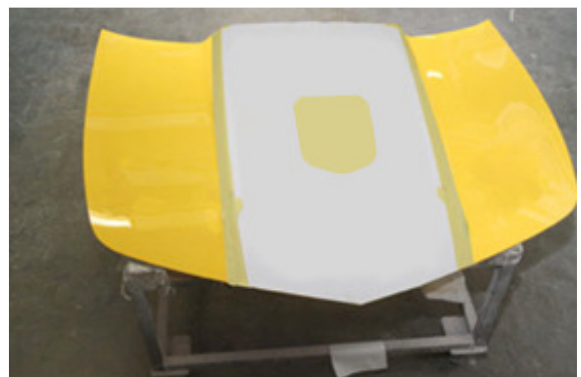
3. Hood Liner Removal and windshield washer nozzle.
- Using a pushpin removal tool remove the 8 pushpins holding the hood liner. Set hood liner aside.



4. Surface Preparation
- Using masking tape cover the area to be worked on; center sections of the hood.



5. Outer Panel Template
- Set the Outer Panel template, using the rear edge of the cowl line and front tip of the hood.
 - Using a black marker scribe the line.
6. Using a utility knife cut through the masking tape to scribe the hood. This line can be used as a guide and to reduce paint chipping during cutting process.

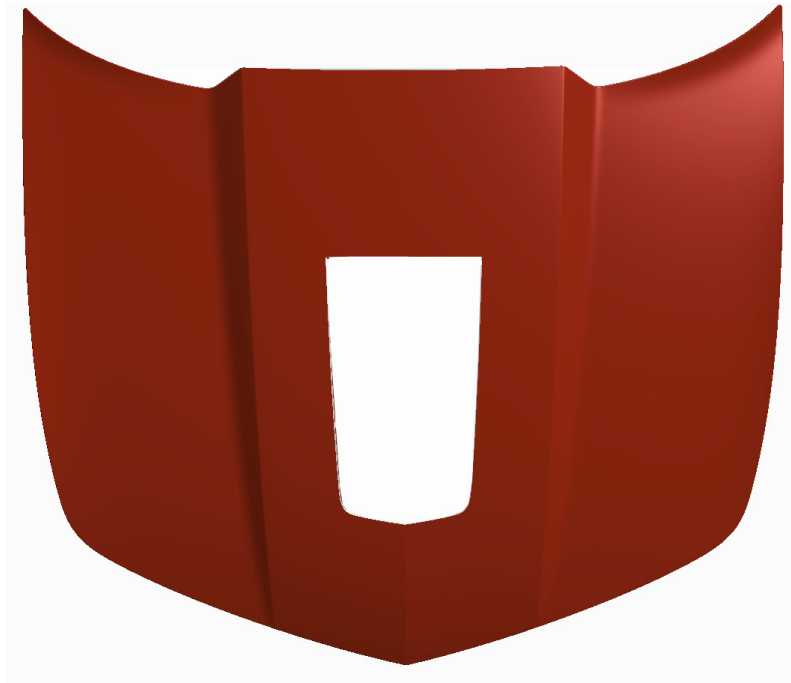


ACS 4Teen Hood Insert Installation Instructions Pn 33-4-171, 33-4-173 & 33-4-175

7. Cutting the Outer Panel

- a. Using a hole saw or a drill bit, drill 4 holes in each inside corner of the scribe lines.
- b. Using a metal cutting tool proceed to cut along the scribed line. Carefully trim the hood. Verify not to overheat the hood, heat may cause distortion in the aluminium panel. It is recommended to trim 5-6 inches and verify its temperature. If panel is hot, let it cool down or work on the other side.
- c. Depending on the tool used you may be cutting only the outer surface.
- d. Remove masking tape from the outer surface and file the edge.

Tip: Once you have reached halfway through cutting the section you may insert an item like a roll of masking tape between the cut section and the hood to prevent any vibrations and risk of damaging the painted surfaces, seam sealer is holding the outer panel to the structure. Due to the flange design, you do have a 1/8" tolerance in trimming.

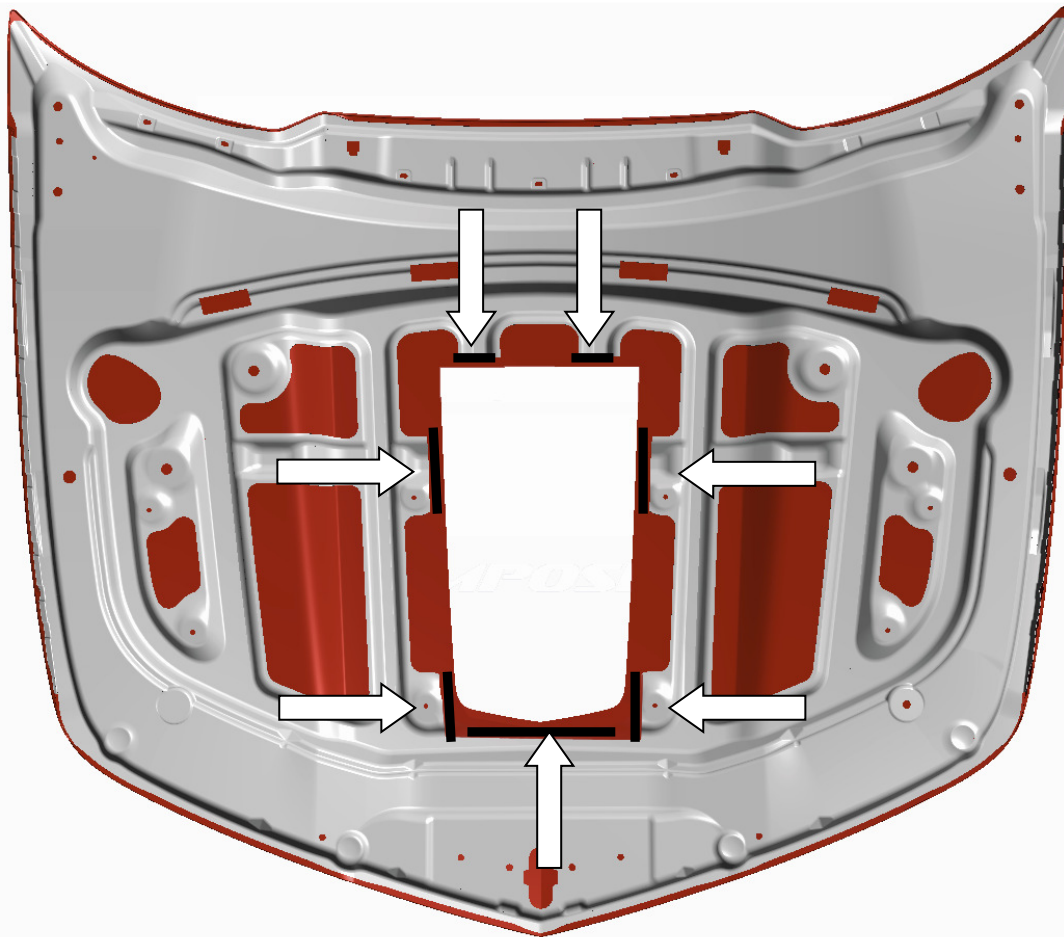


ACS 4Teen Hood Insert Installation Instructions Pn 33-4-171, 33-4-173 & 33-4-175

8. Cutting the inner structure panel

Given these edges will not be visible or functional the trimming tolerance is forgiving on the inner structure. You can also trial fit the panel to ensure enough material has been removed.

- EDGES MARKED WITH A : need to be 1 " larger than the opening of the A side.
- Be sure to not alter the pushpin holes used for the hoodliner.



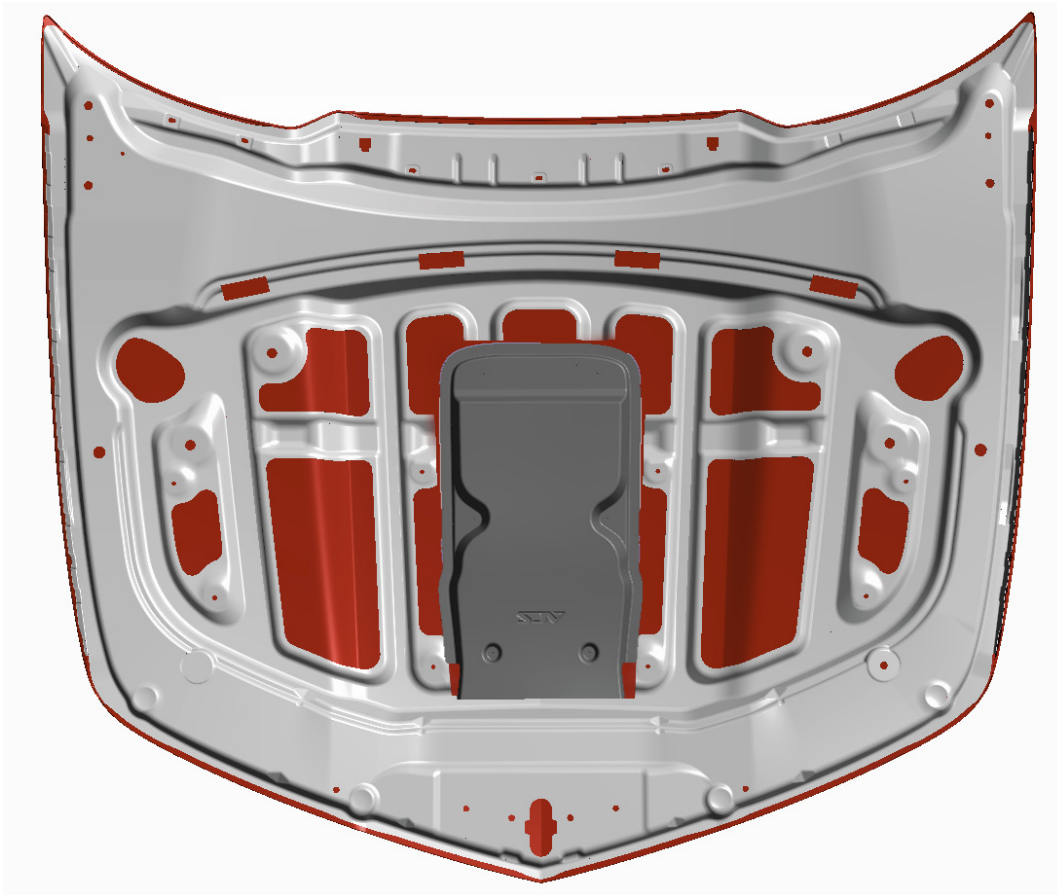
ACS 4Teen Hood Insert Installation Instructions

Pn 33-4-171, 33-4-173 & 33-4-175

9. Trial fitting the panels.

a. Inner Panel

At this point you should be able to easily rest the water tray on the inside surface of the hood. If there is any interference you will need to re-trim the hood.

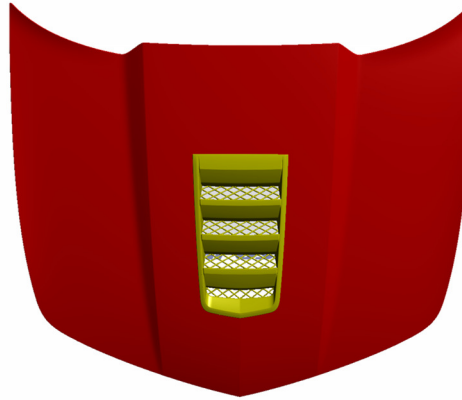


ACS 4Teen Hood Insert Installation Instructions

Pn 33-4-171, 33-4-173 & 33-4-175

b. Outer Panel

Trial fit the outer scoop panel ensuring it sits nicely. Trim accordingly if there is excessive interference.

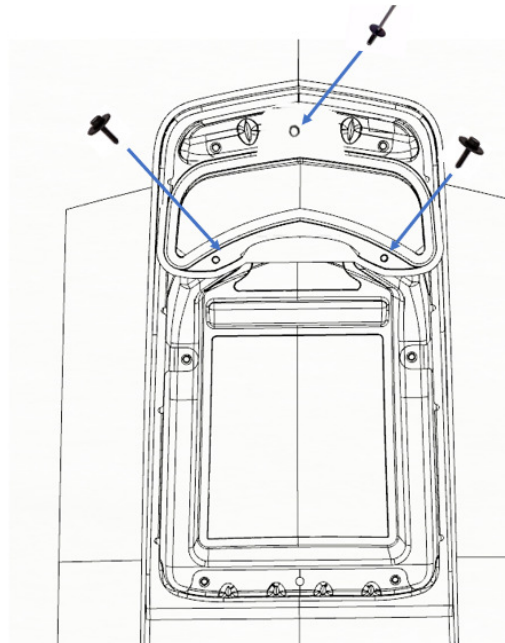


10.

a. Specific for **33-4-173** TLE insert

Pre assemble the hood insert, and grill mesh, and small trim bezel via two 7 mm screws and a rivet located in the front center portion of the scoop.

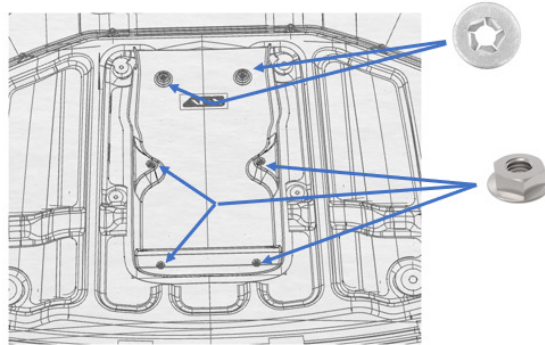
b. Install the water tray using M6 Nuts and Spring washers in the front two studs.



ACS 4Teen Hood Insert Installation Instructions

Pn 33-4-171, 33-4-173 & 33-4-175

11. With the help of an assistant, install the Undertray, and Outer panel, and install the 6 – M6 nuts. Before tightening ensure insert is centered and properly positioned.



12. Using the Hood liner Trimming template and a utility knife. Position the template using the 4 central pushpin holes and trim a clean edge.

13. Re install the hood liner to the hood assembly and fasten the pushpins.

14. Hood Installation

- With the help of an assistant reinstall the hood on the vehicle.
- Make sure the 13 mm nuts are properly torqued and windshield washer hose is reconnected.
- Reconnect the hood gas strut.

Congratulations! Installation is complete.
We invite you to share images on our Facebook Page.

Search: Acs Composite

For questions or warranty information please email us at: acs@acscomposite.com