

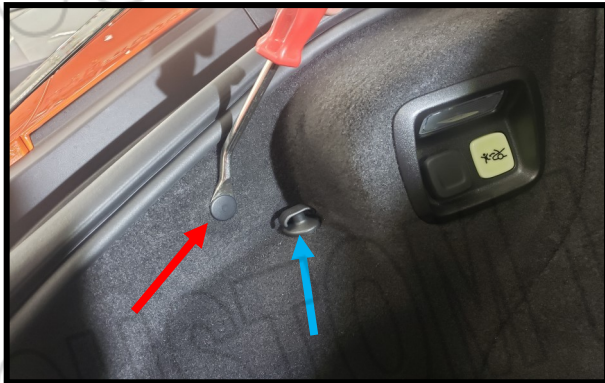
C8 FRONT TRUNK LEDS



You will need a panel removal tool similar to this one. They are available at any auto parts store.



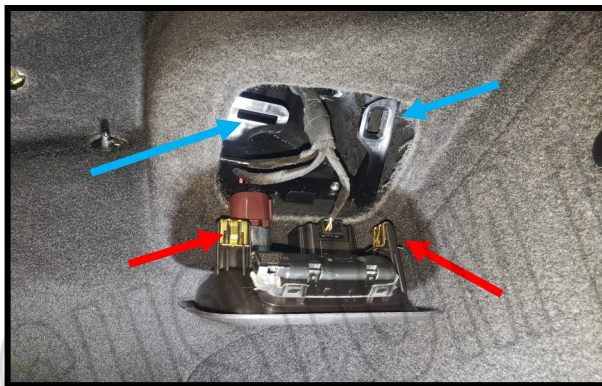
Pull up on the weather strip that surrounds the trunk. You will need access across the front and Passenger side as shown.



Remove the trunk net. Using the panel tool remove the flat retainer (red arrow). Unscrew the net retainer. (blue arrow).



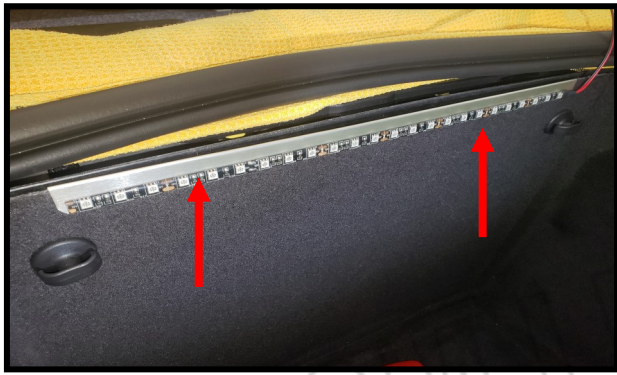
Pry out the light housing starting at this corner. The bracket that the light attaches to is very flexible so we found it is best to also push the housing out from behind at the same time. See next picture.



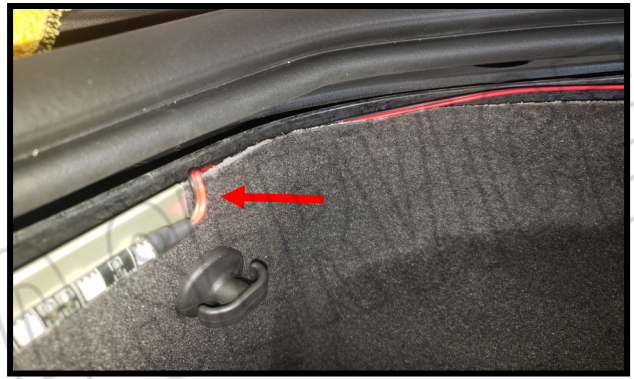
Red arrows show the clips you need to push out of the bracket from behind. (blue arrows).



Pull back the trunk liner and push out the retainer clips and remove the light housing.



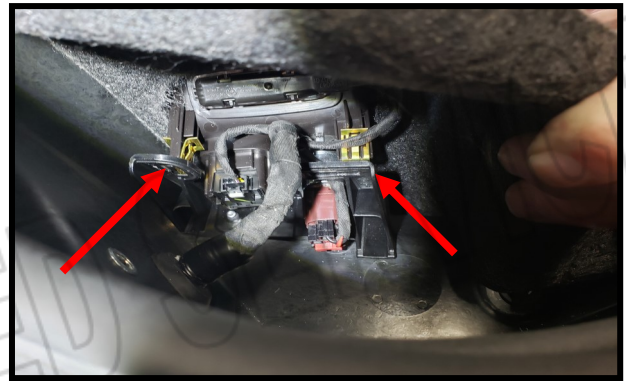
Slide the led bracket over the trunk liner. Center it over the 2 net retainer nuts as shown.



Shape the wire in a U-fashion and tuck it behind the trunk liner all the way around through the light opening.



Depress the small tang on the factory light connector and disconnect the light. Plug in the led wire. The led strip should now light up. Keep in mind the lights will time out after 15 minutes so you may have to close and open the trunk to re-activate the lights.



Re-install the light housing by lining up the clips with the bracket openings. Support the bracket from behind while pushing the light housing back in place.



You can now re-install the weather strip. The u-channel on the weather strip goes over the rigid outer liner and the lip under my thumb will cover the inner liner.



Pull the lip of the weather strip over the exposed portion of the led bar hiding the wire the best you can. Do this around the entire weather strip that you remove. That's it! Enjoy the new lights.

C8 REAR TRUNK LEDS

The factory lights will be disabled when this kit is installed. You wont miss them!



Lift up on the weather strip across the entire back of the trunk.



Remove the trunk net retainer on each side of the trunk to gain access to the factory lights.



Depress the tab to unplug both lights. They will be non-functional.



With the led strip with the connector end on the passenger side, slip the channel over the trunk liner aligning the slot on the back of the channel directly above the trunk net retainer. The channel is flexible so you can shape it to match the slight bend in the trunk .

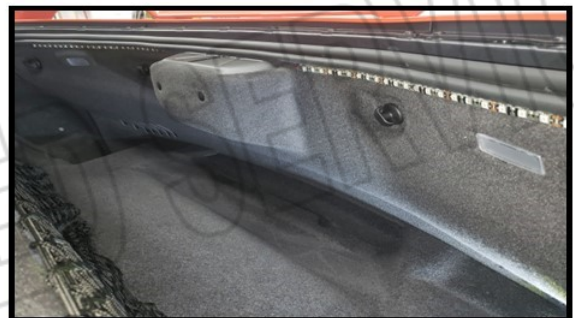


Mount both strips as shown, bend the wires in a U shape and tuck the wire behind the liner.

Plug in the led connector to the factory harness. The lights will time out after 15 minutes so you may need to close and then re-open the trunk to activate the lights. Now re-install the weatherstrip.



Install the weather strip u channel over the trunk outer liner while pulling the front lip of the weatherstrip out to cover the led channel bracket and inner liner.



Push down firmly on the weather strip and run your finger under the front lip to cover the wires and brackets.