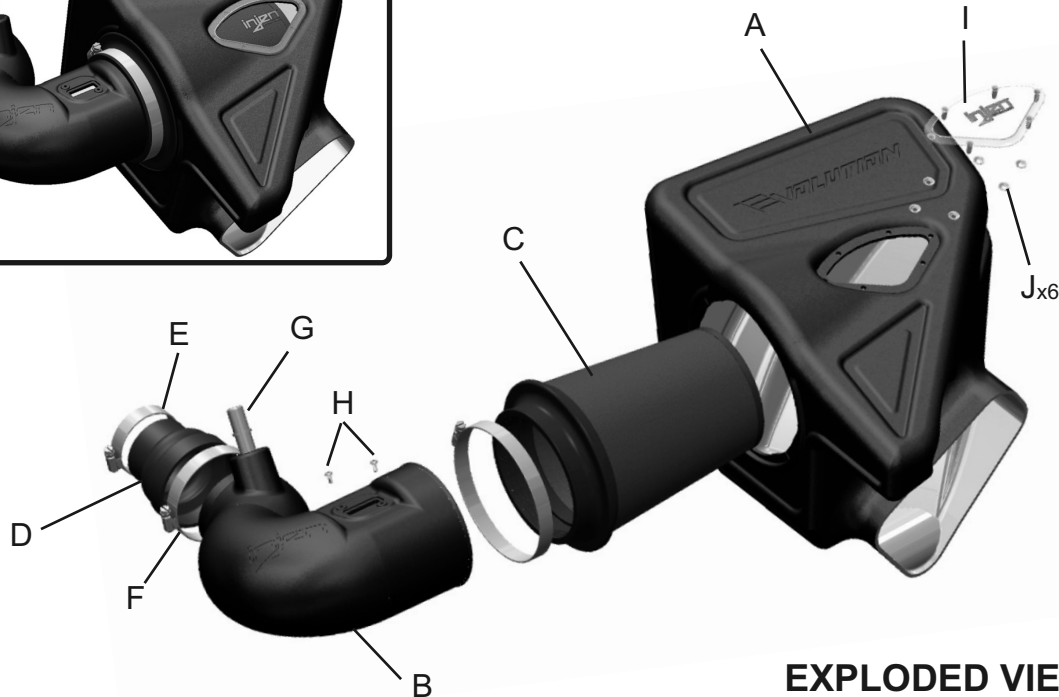




Vehicle Application:			
Make:	Chevrolet		
Model:	Camaro (6th Gen.)		
Year:	2016-2020		
Engine:	2.0L 4 Cyl. Turbo		



Item	QTY.	P/N	Discription
A	1	#15124	Air Box
B	1	#15123	Intake tube
C	1	#1093	Twist-Lock™ dry filter
D	1	#3214	2.375"X3.375" hump hose
E	1	#4003	#40 clamp
F	1	#4005	#56 clamp
G	1	#14063	Machined 5/8" Fitting
H	2	#6047	M4 screws
I	1	#15122	injen ClearVue window
J	6	#6109	Self retaining lock washers

EXPLODED VIEW

WARNING: FAILURE TO FOLLOW INSTALLATION INSTRUCTIONS AND NOT USING THE PROVIDED HARDWARE MAY DAMAGE THE INTAKE SYSTEM, ENGINE AND COMPONENTS!!!

***Do not attempt to install the intake system while the engine is hot.**

Severe burn could result from touching hot engine components!

TOOLS REQUIRED

- 10mm Ratchet & Socket
- 8mm nut drive
- Allen key
- Needle nose
- Phillips Screwdriver
- Pliers

Report any defective or missing parts to the authorized Injen dealer you purchased this product from. Before installing any parts of this system, please read the instructions thoroughly. If you have any questions regarding installation, please contact your Injen Technology dealer. Installation DOES require some mechanical skills. A qualified mechanic is always recommended.

A Limited Lifetime Warranty to the original purchaser against defects in material and workmanship on all Injen intake systems excluding the filter element. Any and all warranty coverage is limited to the repair or replacement of the defective part only, at Injen Technology's discretion. The warranty does not cover incidental or consequential damages, nor does it cover the cost of installation or removal of the defective part or its replacement. Proof of purchase is required.

Note: 17 and up Camaro models only:

The later Model 6th Gen Camaros have a tamper proof crankcase line that is attached to the OEM intake tube. In order to remove the crank case line, the following tool will have to be used in order to complete the installation of the injen intake system. This part can be purchased at most Automotive parts stores. For any other additional information, please visit injen.com.

The photo below is a multi size disconnect tool set used to disconnect the OEM tamper proof crankcase line.



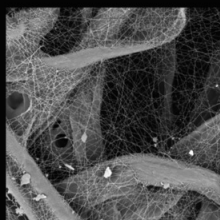
Instruction Manual P/N:EVO7300

The SuperNano-Web filter media is a dry synthetic media that outperforms the competition. The media itself is a proprietary base blend of synthetics and cellulose. Cellulose fibers are larger than synthetic fibers, and have larger spaces between the fibers, causing contaminants to load in the depth of the media and plug the airflow path. This creates higher restriction levels and less capacity. The synthetic fibers in the SuperNano-Web media are submicron in diameter and have small interior fiber spaces, which result in more contaminants being captured on the surface of the media. This can help keep restriction levels low as the filter loads with dirt and containments

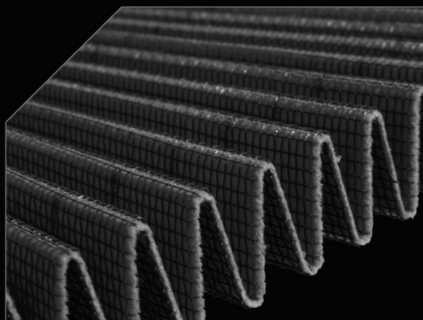
injen
TECHNOLOGY



Existing media without
Injen SuperNano-Web Technology



Superior Injen
SuperNano-Web Technology



A New Generation of Filters
Designed to perform and
filter like no other

INJEN SuperNano-Web Technology

If you look at the picture to the left, you can see the Nano-fiber web on top of our base media. That web, or SuperNano-Web as we like to call it, helps trap smaller particles and protect your engine.

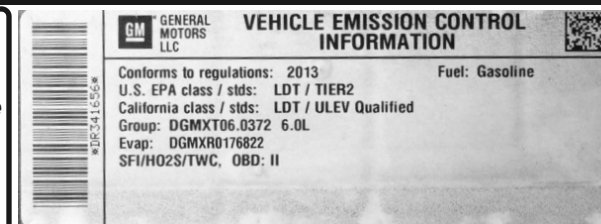
To Clean your filter:

Carefully remove the filter from the housing. Once removed, wipe down the housing using a clean shop towel, being careful not to knock any dirt and/or debris in the air inlet. Your filters can be cleaned by carefully vacuuming the filter media from the dirty side, or by holding the filter with one hand and carefully blowing the filter media at a 45-degree angle from the clean side using low-pressure shop air (15-20 lbs. psi).

***IT IS IMPORTANT TO NOT USE ANY CLEANERS
ON THE SUPERNANO-WEB MEDIA OR APPLY ANY
OIL!!!**

Vehicle Emission Control Information:

If your OE air box has a Vehicle Emission Control Information decal affixed to it, removing your OE air box will also remove the Vehicle Emission Control Information decal. A visible VECI decal must be visible in the engine compartment to be CARB compliant. The VECI decal must be affixed to a component that is not easily removable. You can purchase a replacement VECI decal from your local dealership. Failure to have a visible Vehicle Emissions Control information decal will prevent the vehicle from passing a smog test. Sample Vehicle Emission Control Information decal shown



Note:

The C.A.R.B. Exempt sticker must be attached under the hood in a manner that is easily viewed by an emissions inspector.

NOTE: DISCONNECT BATTERY BEFORE INSTALLATION!!!

Instruction Manual P/N:EVO7300



1. Stock intake system shown.



2. Disconnect the MAF sensor harness and pull line away from the intake tube.



3. With 8mm nut driver, loosen the clamp on the throttle body and pull back tube from turbo.



4. Now disconnect the Crank case fitting from the intake tube and pull back from tube. *Later models, see 2nd page of this instruction sheet. Tool required.*



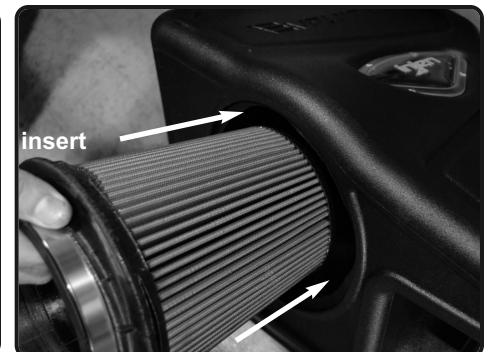
5. Now Lift up air box from vehicle and remove complete stock air box assembly.



6. With T25 torx bit, loosen the 2 screws holding in the MAF sensor.



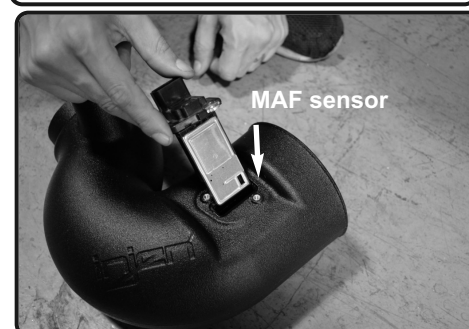
7. Remove the MAF sensor from the stock air box.



8. Install the filter into the passenger side air box housing. Position the Twist-Lock™ filter pattern to the hole cut out on air box.



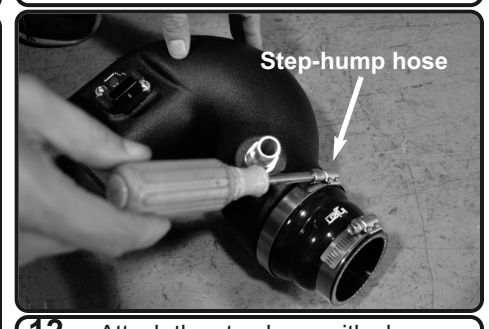
9. Now secure the Twist-Lock™ filter turning 1/4 turn in either direction. Make sure the filter locks into place.



10. Install the MAF sensor into the tube.



11. Secure and tighten the MAF sensor using provided M4 button head screws.



12. Attach the step hose with clamps provided to the intake tube. Tighten clamp on tube only using 8mm nut driver.



13. Install the intake tube assembly to the filter. *Do not tighten.*



14. Now install the intake into the vehicle. Position the tabs on air box to OEM grommet locations. Position the tube to the turbo. *Do not tighten.*



15. Make sure the intake tube is secured on the turbo. Make sure the airbox is seated properly. Position for best fit.



16. Adjust if needed, secure and tighten the clamp on turbo using 8mm nut driver. Tighten clamp on filter also.



17. Re-connect the crank case line to the fitting on the intake tube. Make sure you hear the click to make sure its secured.



18. Re-connect the MAF sensor harness.



Congratulations! You have just completed the installation of this intake system. Periodically, check the alignment of the intake, normal wear and tear can cause nuts and bolts to come loose. **Note: Check clearance and adjust if needed! Failure to check the alignment and adjust the intake can cause damage that will void the warranty. Injen Technology is not responsible for any damages caused by/from improper installation.**

Test Drive:

1. With the transmission in neutral or park and the parking brake engaged, start the engine. Listen for air leaks or odd noises. If air leaks are detected, secure hoses and connections. For any odd noises, inspect entire system for cause and adjust intake as needed. The Injen intake will function identically to the factory system but will be louder and more powerful.
2. Perform a road test. Listen for odd noises or rattles and fix as necessary.
3. If there are no issues, continue to enjoy your added performance from the Injen performance Intake kit.
4. Injen Technology recommends you periodically check clearance and adjust if needed! Failure to check the alignment and adjust the intake can cause damage that will void the warranty. Injen Technology is not responsible for any damages caused by/from improper installation.

1. Upon completion of the installation, reconnect the negative battery terminal before you start the engine.
 2. Align the entire intake system for the best possible fit. Once the intake has been properly fitted continue to tighten all nuts, bolts and clamps.
 3. Periodically, recheck the alignment of the intake system and make sure there is proper clearance around and along the length of the intake. Failure to follow proper maintenance procedures may cause damage to the intake and will void the warranty.
 4. Start the engine and listen carefully for any odd noises, rattles and/or air leaks prior to taking it for a test drive. If any problems arise go back and check the vacuum lines, hoses and clamps that maybe causing leaks or rattles and correct the problem.
 5. Check the filter for excessive dirt build up. Clean or replace the filter with an original Injen filter (can be bought on-line at "injenonline.com").
- Congratulations! You have just completed the installation of the best intake system sold on the market. Enjoy the added power and performance of your new intake system.