



Tubular Motor Mount Installation Instructions

BMR recommends professional installation of this product. A service lift is also recommended for installation of this product. Engine coolant is drained during install. Please review installation instructions to ensure you have all necessary items before proceeding.

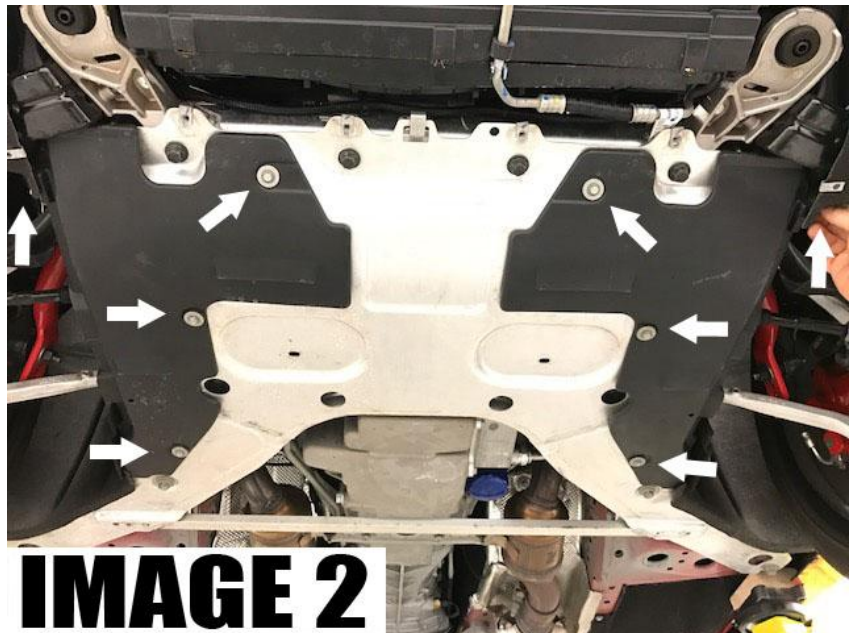
TOOLS REQUIRED:

- Ratchet with swivel style head
- Long extension
- 2 swivels
- Sockets: 7mm, 10mm, 15mm, 18mm deep, 24mm, T15 torx
- Hook/pick tool
- Push pin removal tool
- High reach auxiliary jack stand
- Drain Pan



INSTALLATION:

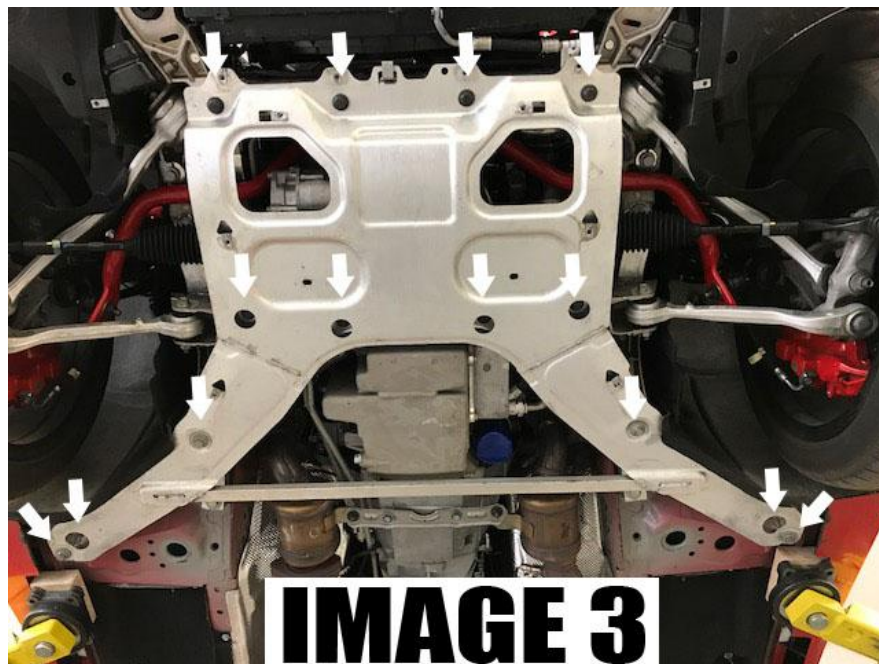
1. Place the vehicle on the lift, and the auxiliary jack stand under the engine.
2. Remove (10) **7mm** bolts, (6) **10mm** bolts, and (1) push pin from front lower splash shield as shown in **IMAGE 1** and remove shield.
3. Remove (6) **10mm** bolts, (2) push pins, and (4) **T15** torx bolts from wheel wheel/lower splash guard as seen in **IMAGE 2** and remove lower splash shields.



WWW.BMRSUSPENSION.COM

This product is an aftermarket accessory and not designed by the vehicles manufacturer for use on this vehicle. As such, buyer assumes all risk of any damage caused to the vehicle or person during installation or use of this product.

Tubular Motor Mount Installation Instructions



4. Remove (14) **15mm** bolts from the chassis brace as shown in **IMAGE 3**.
5. Swing chassis brace downward towards the front of the car, and unhook from the front of the k-member as shown in **IMAGE 4**.



WWW.BMRSUSPENSION.COM

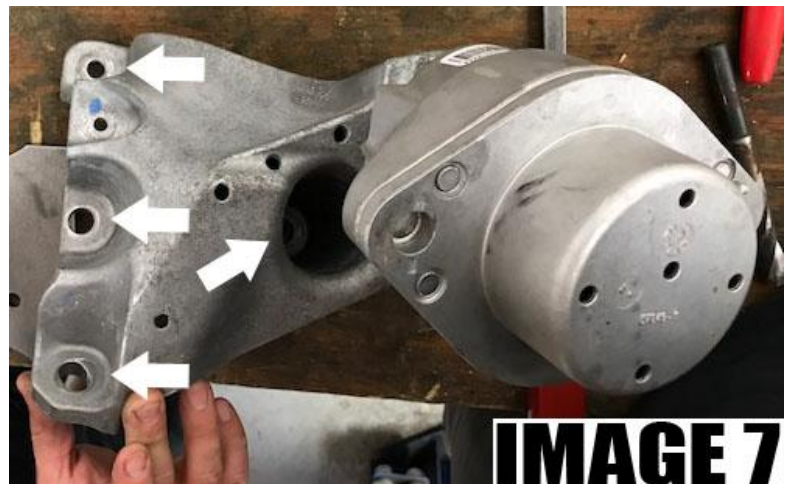
This product is an aftermarket accessory and not designed by the vehicles manufacturer for use on this vehicle. As such, buyer assumes all risk of any damage caused to the vehicle or person during installation or use of this product.

Tubular Motor Mount Installation Instructions

Driver side:

6. Remove engine oil cooler line as shown in **IMAGE 5**.
7. Remove plug on rear of A/C compressor as shown in **IMAGE 6**.
8. Remove push pin holding wiring harness to the engine stand.
9. Remove (4) **15mm** bolts holding the motor stand to the engine as shown in **IMAGE 7**.

NOTE: Front upper bolt requires a 2 swivels as shown in **IMAGE 8**.



WWW.BMRSUSPENSION.COM

This product is an aftermarket accessory and not designed by the vehicles manufacturer for use on this vehicle. As such, buyer assumes all risk of any damage caused to the vehicle or person during installation or use of this product.

Tubular Motor Mount Installation Instructions

10. Using the swivel head ratchet and **15mm** socket, remove (2) bolts from motor mount as shown in **IMAGE 9**.

11. Lower engine stand assembly as much as possible. Using the swivel head ratchet and **18mm** deep socket, loosen motor mount bolt as shown in **IMAGE 10 and 11**.

12. Remove engine stand and mount from vehicle.

NOTE: Engine may need to be raised using the auxiliary jack. If needed, skip to passenger side instructions and loosen passenger side stand to allow the engine to move upward without binding.

13. Remove **15mm** bolt as shown in **IMAGE 12** and move wiring downward and out of the way.

IMAGE 9



IMAGE 10



IMAGE 12



IMAGE 11

WWW.BMRSUSPENSION.COM

This product is an aftermarket accessory and not designed by the vehicles manufacturer for use on this vehicle. As such, buyer assumes all risk of any damage caused to the vehicle or person during installation or use of this product.

Tubular Motor Mount Installation Instructions

14. Using (4) **15mm** bolts, install tubular mount as shown in **IMAGE 13**, ensuring wiring is not between the mount and engine.

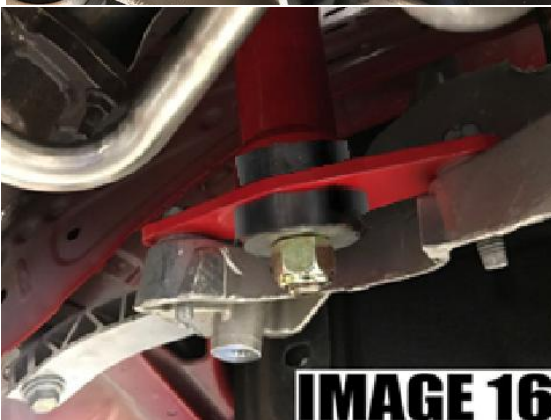
15. Install bushing, followed by lower motor mount plate with (2) **15mm** bolts as shown in **IMAGE 14**. Ensure shoulder of bushing is aligned in hole on plate as shown in **IMAGE 15**.

16. Install lower bushing, washer, and nut using **24mm** socket. Tighten until at least 2 threads are exposed as shown in **IMAGE 16**.

17. Plug in A/C harness.

18. Reinstall oil cooler line, and reinstall clip to secure the line as shown in **IMAGE 17**.

19. **IMAGE 15**



WWW.BMRSUSPENSION.COM

This product is an aftermarket accessory and not designed by the vehicles manufacturer for use on this vehicle. As such, buyer assumes all risk of any damage caused to the vehicle or person during installation or use of this product.

Tubular Motor Mount Installation Instructions

Passenger Side:

1. Using **10mm** socket, remove transmission line tab from engine stand as shown in **IMAGE 18**.
2. Remove (3) **15mm** bolts holding engine stand as shown in **IMAGE 19**.
3. Using **15mm** socket and swivel head ratchet, remove 2 bolts holding motor mount as shown in **IMAGE 20**.
4. Remove motor mount assembly as shown in **IMAGE 21**.



WWW.BMRSUSPENSION.COM

This product is an aftermarket accessory and not designed by the vehicles manufacturer for use on this vehicle. As such, buyer assumes all risk of any damage caused to the vehicle or person during installation or use of this product.

Tubular Motor Mount Installation Instructions

5. Using **15mm** socket, remove ground strap bolt as shown in **IMAGE 22**. **NOTE: THIS BOLT IS NOT REUSED WHEN INSTALLING MM362 MOTOR MOUNTS.**
6. Install new motor mount as shown in **IMAGE 23**, noting the location of the wiring harness and aluminum spacer included with the supplied hardware. **NOTE: MAKE SURE GROUND STRAP IS REINSTALLED BEHIND THE MOTOR MOUNT.**
7. Install upper aluminum spacer and motor mount plate using **15mm** socket and swivel head ratchet as shown in **IMAGE 24** and **25**.



WWW.BMRSUSPENSION.COM

This product is an aftermarket accessory and not designed by the vehicles manufacturer for use on this vehicle. As such, buyer assumes all risk of any damage caused to the vehicle or person during installation or use of this product.

Tubular Motor Mount Installation Instructions

8. Install lower bushing, washer, and nut and tighten using **24mm** socket until at least 2 threads are visible as shown in **IMAGE 26**.
9. Reinstall chassis brace and all splash guards. Refer to steps 5 - 2 in reverse order.
10. Lower car, refill cooling system.



WWW.BMRSUSPENSION.COM

This product is an aftermarket accessory and not designed by the vehicles manufacturer for use on this vehicle. As such, buyer assumes all risk of any damage caused to the vehicle or person during installation or use of this product.