



2016-2019 Cadillac CTS-V3 Console Switch Panel

PART NUMBER: 00-11044

INSTALLATION INSTRUCTIONS

This Nitrous Outlet vehicle specific switch panel is designed specifically for the 2016-2019 Cadillac CTS-V3. If you need any assistance during installation or if you have questions about this plate system, call our Tech Help Line at (254) 848-4300.

Tools Needed for Installation*:

- 10mm Deep Socket
- Ratchet
- Body Tool
- Drill
- 1" Step Bit
- Small Section of 2x4

*These are the tools required for installation of this kit on a stock vehicle. If your vehicle has aftermarket parts, other tools may be required.



Step 1 – Disconnect the Battery

- Using a 10mm socket, loosen the nut and remove the negative battery terminal.



Step 2 – Vehicle Disassembly

- Using the body tool, pry the rear control panel away from the console.



- Disconnect the 2 electrical connectors on the back of the panel.



- Using the body tool, pry the trim panel on the passenger side from the center console then pull it from the retaining clips.

IMPORTANT: All appropriate safety equipment (gloves, tools etc.) must be used during the installation of this product(s). Nitro Dave's LLC accepts NO responsibility for injuries resulting in the installation of any product(s). Nitrous oxide is for off-road use only.

WWW.NITROUSOUTLET.COM/INSTALLATION-GUIDES.COM



2016-2019 Cadillac CTS-V3 Console Switch Panel

PART NUMBER: 00-11044

INSTALLATION INSTRUCTIONS



- Using the body tool, pry the trim panel on the driver side of the center console then pull it from the retaining clips.



- Using a 10mm deep socket, remove the bolts on each side of the console.



- Lift the rear of the console and place a section of 2x4 underneath. This is to create a gap between the bottom of the console storage compartment and the air conditioning ducting that feeds the rear air vents.



Step 3 – Switch Panel Installation

- In the console storage compartment, drill a 1" hole in the passenger side rear corner.



- Pull your wires through the hole in the center console.

IMPORTANT: All appropriate safety equipment (gloves, tools etc.) must be used during the installation of this product(s). Nitro Dave's LLC accepts NO responsibility for injuries resulting in the installation of any product(s). Nitrous oxide is for off-road use only.

WWW.NITROUSOUTLET.COM/INSTALLATION-GUIDES.COM



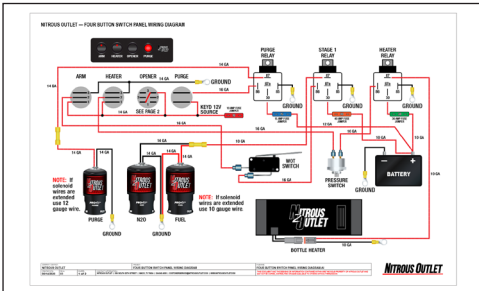
2016-2019 Cadillac CTS-V3 Console Switch Panel

PART NUMBER: 00-11044

INSTALLATION INSTRUCTIONS



- Remove the 2x4 supporting the console. Push the switch panel down in the compartment. You may need to gently pull the wires from underneath the console so that the panel fits snugly in position.



Step 4 – Wiring

- This step will cross over into the installation of other components you are installing in conjunction with the switch panel, such as nitrous controller, bottle heater, purge etc. Using the diagrams that came with those components route the wiring.

****Note:** The diagram to the left is a basic system diagram with a WOT Switch. To view a larger diagram, turn to the last page of these instructions, however you should be using a nitrous controller that incorporates a window safety switch with TPS activation.



Step 5 – Final Check Over

- Reconnect the battery.
- With the nitrous bottle still closed check the system functions to ensure proper wiring and proper settings of any electronic controllers.



Step 6 – Final Assembly

- Using a 10mm socket, reinstall the bolts on each side of the front of the console.



- Reinstall the driver side console panel.

IMPORTANT: All appropriate safety equipment (gloves, tools etc.) must be used during the installation of this product(s). Nitro Dave's LLC accepts NO responsibility for injuries resulting in the installation of any product(s). Nitrous oxide is for off-road use only.

WWW.NITROUSOUTLET.COM/INSTALLATION-GUIDES.COM



2016-2019 Cadillac CTS-V3 Console Switch Panel

PART NUMBER: 00-11044

INSTALLATION INSTRUCTIONS



- Reinstall the passenger side console panel.



- Reinstall the rear control panel, making sure to reconnect the 2 electrical plugs.



Conclusion

- You have finished your installation.

IMPORTANT: All appropriate safety equipment (gloves, tools etc.) must be used during the installation of this product(s). Nitro Dave's LLC accepts NO responsibility for injuries resulting in the installation of any product(s). Nitrous oxide is for off-road use only.

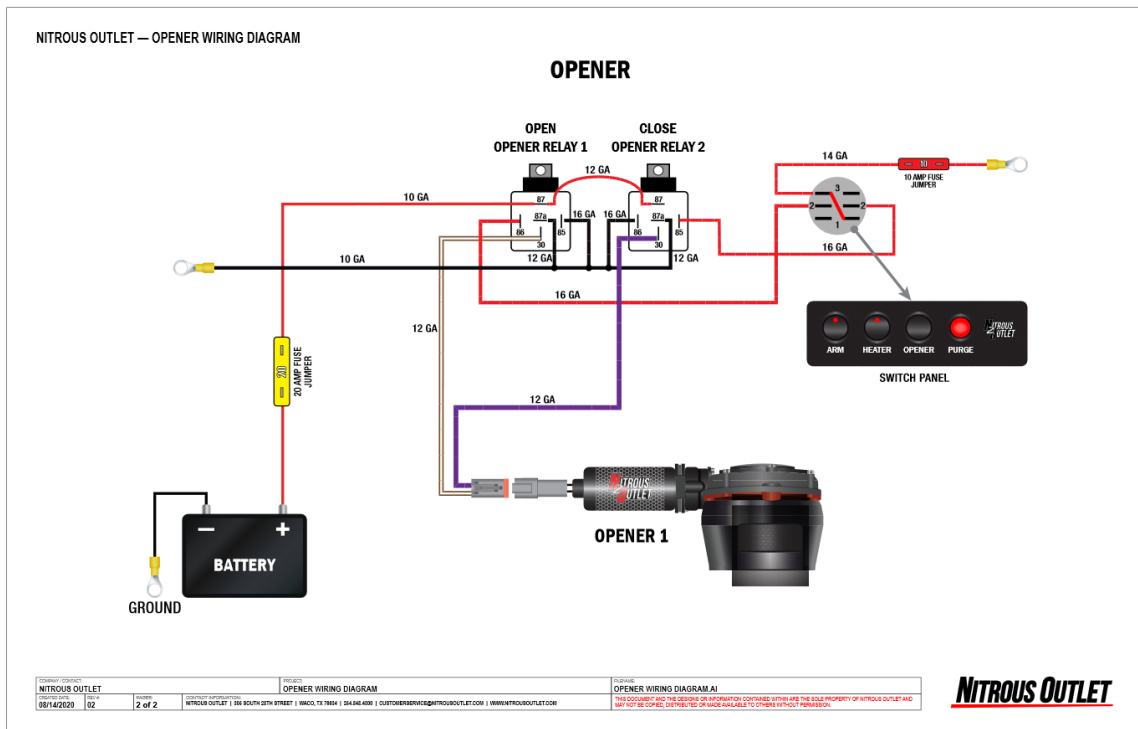
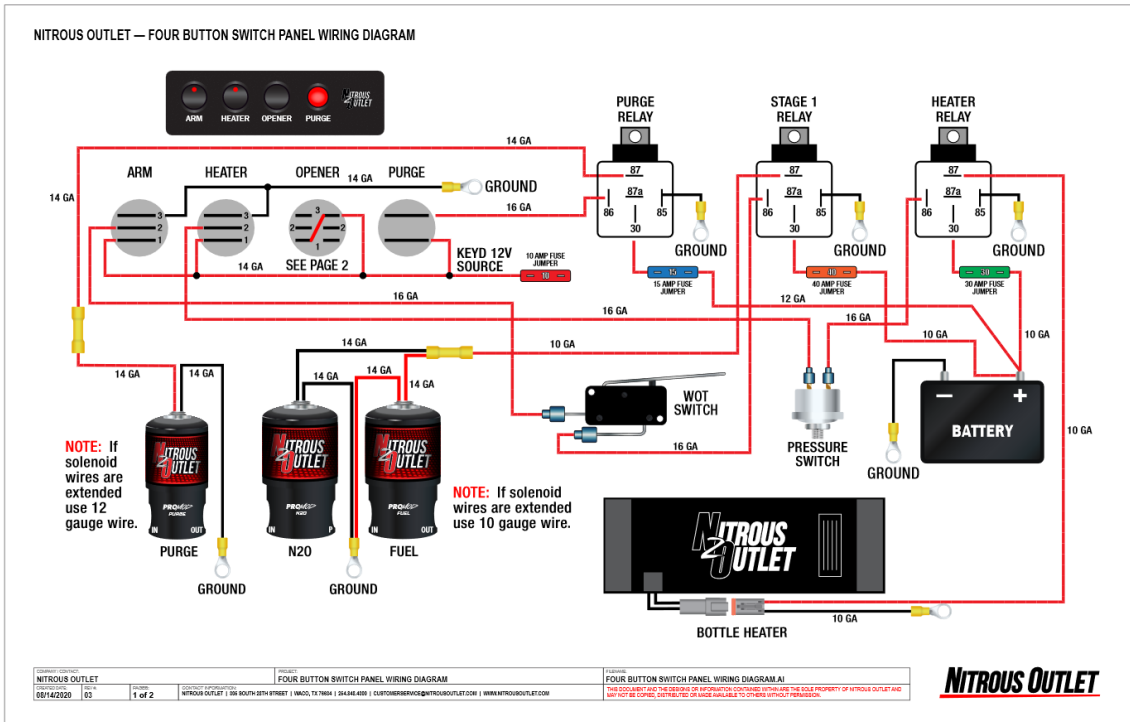
WWW.NITROUSOUTLET.COM/INSTALLATION-GUIDES.COM



2016-2019 Cadillac CTS-V3 Console Switch Panel

PART NUMBER: 00-11044

INSTALLATION INSTRUCTIONS



IMPORTANT: All appropriate safety equipment (gloves, tools etc.) must be used during the installation of this product(s). Nitro Dave's LLC accepts NO responsibility for injuries resulting in the installation of any product(s). Nitrous oxide is for off-road use only.

WWW.NITROUSOUTLET.COM/INSTALLATION-GUIDES.COM