

# **VERTICAL DOORS, INC.**

*VerticalDoors.com*

542 3<sup>Rd</sup> Street, Lake Elsinore, CA 92879  
TEL: (951) 245-8669, FAX: (951) 245-5481



## **CHEVROLET CAMARO 2016+ 6<sup>th</sup> Generation**

U.S. PATENTS

#6,808,223; #6,845,547; #7,140,075; #7,059,655

PATENTS AGGRESSIVELY ENFORCED!

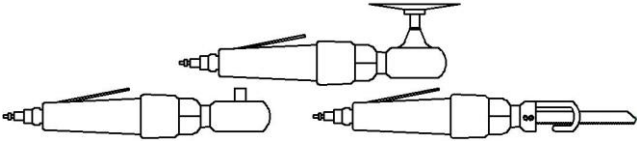
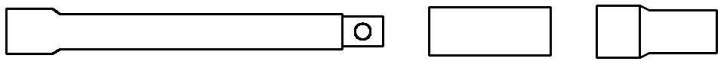



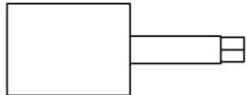
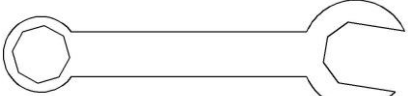

**PLEASE CAREFULLY READ ALL INSTRUCTIONS  
BEFORE ATTEMPTING TO INSTALL THIS PRODUCT.**

**FOR QUESTIONS PLEASE  
CONTACT US AT (951) 245-8669**

## THIS KIT INCLUDES:

- 8 M8-1.25X30MM BOLTS WITH WASHERS
- 8 M8-1.25X40MM BOLTS WITH WASHERS
- 2 THREADED CLIPS WITH BOLTS
- 2 PINS
- RIGHT AND LEFT HINGE ASSEMBLY
- 2 SHOCKS
- 2 GREASE FITTINGS FR SHOCK ENDS
- 2 SHOULDER BOLTS
- 2 FENDER BRACKETS
- 2 M8-1.25X20 BOLTS

## TOOLS REQUIRED FOR INSTALLATION:

|   |  |
|---|--|
|    | <ul style="list-style-type: none"> <li>➤ AIR RACHET, GRINDER AND CUTTER.</li> </ul>                    |
|   | <ul style="list-style-type: none"> <li>➤ 7MM, 8MM, 10MM, 11MM, 13MM, SOCKETS AND EXTENSION.</li> </ul> |
|   | <ul style="list-style-type: none"> <li>➤ FORK AND PHILLIP'S SCREW DRIVERS</li> </ul>                   |
|   | <ul style="list-style-type: none"> <li>➤ SPACERS FOR THE DOOR GAP.</li> </ul>                          |
|  | <ul style="list-style-type: none"> <li>➤ 3/16 ALLEN WRENCH</li> </ul>                                  |
|  | <ul style="list-style-type: none"> <li>➤ 1/4 TORX BIT</li> </ul>                                       |
|  | <ul style="list-style-type: none"> <li>➤ 9/16 WRENCH</li> </ul>  |
|  | <ul style="list-style-type: none"> <li>➤ LOCKTITE RED</li> </ul>                                       |

**OTHER TOOLS MAY BE NEEDED DEPENDING ON YOUR VEHICLE.**

**"Installers with experience recommended"**

**(Note: The pictures In the manual are for reference only they may not match your vehicle.)**

Disconnect the battery.

Remove the fender:



Remove all Philips screws and fasteners from the wheel well.

Remove 4 bolts as shown in the picture on the right. Pull the front bumper forward to gain access to the bolts holding the front section of the fender to the chassis.



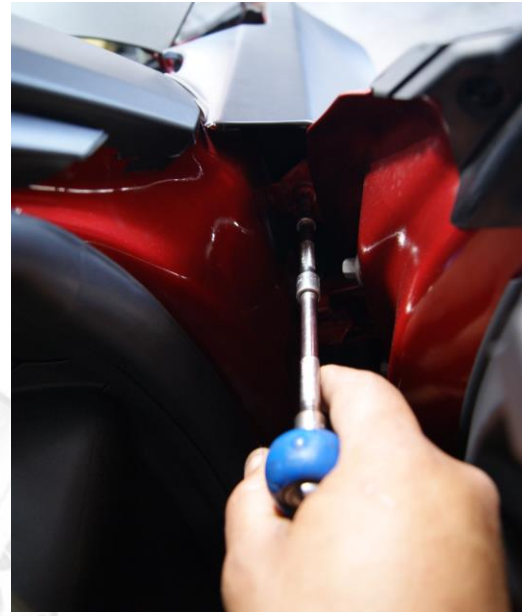
Use painters take to protect the edge of the fender from accidental scratches



Remove the bolts securing the front fender to the chassis and front bumper



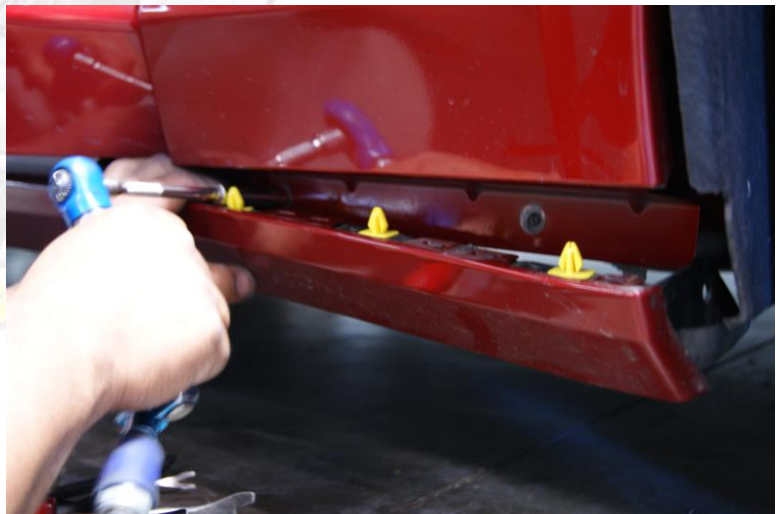
Open the door and remove the bolt securing the top of the fender to the apron as shown



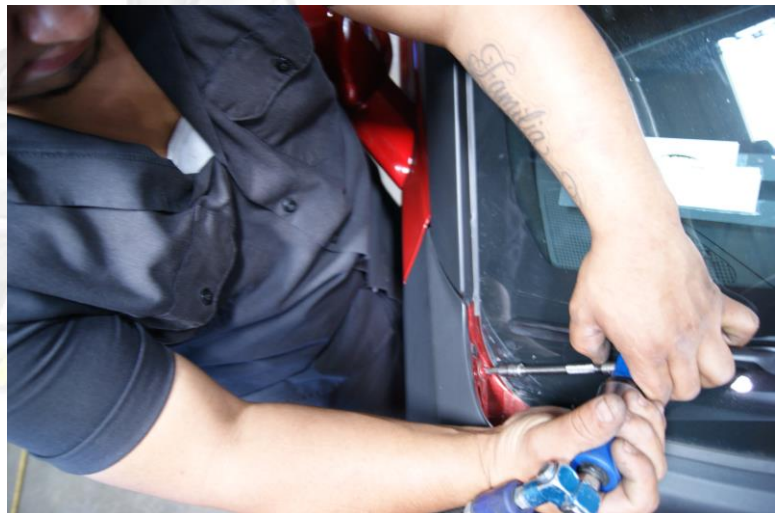
Turn the wheel all the way and pull back on the splash guard. You will need a long extension on the passenger side. You will have to go behind the windshield washer reservoir to get to the bolt securing the fender to the apron.



You will have to remove the side skirt to gain access to the bolt at the bottom of the fender. Our tech only removed the first couple of clips but we highly recommend you remove the entire side skirt to avoid damaging it.



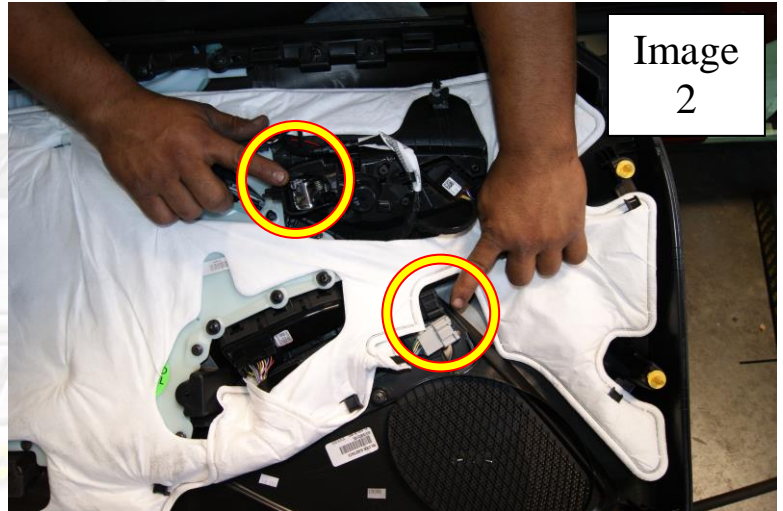
Remove the cover at the top of the fender to gain access to the last bolt securing the fender to the chassis. CAREFULLY remove the fender making sure not to scratch the Bumper or door in the process.



You will need to remove the door panel.

Remove the (3) 7mm bolts securing the door panel to the door as shown on the Image 1.

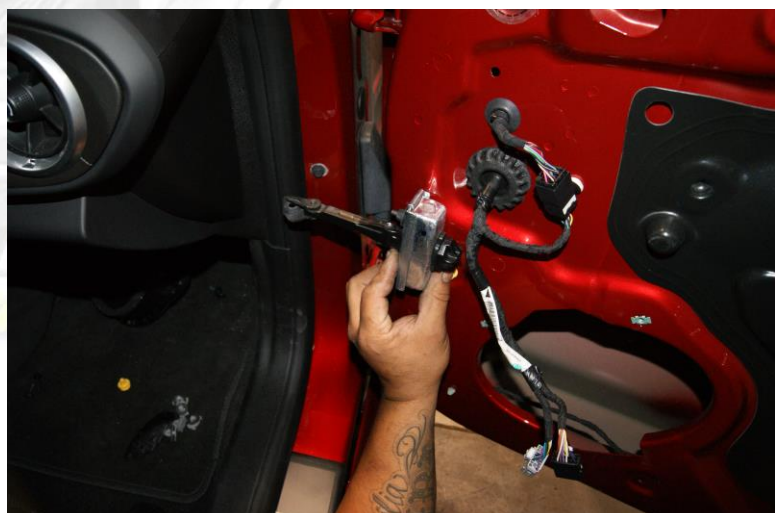
Before you can remove the door panel, carefully remove the interior wire harness and the pull cable as shown on Image 2.



You will need to remove the speaker from the door. Once the door panel is off the door, remove two clips as shown below this will give you the extra wire slack needed to allow the door to be raised up. Also remove the tape that holds the wire harness to the inner boot on the door side this will allow the wire harness to move freely.



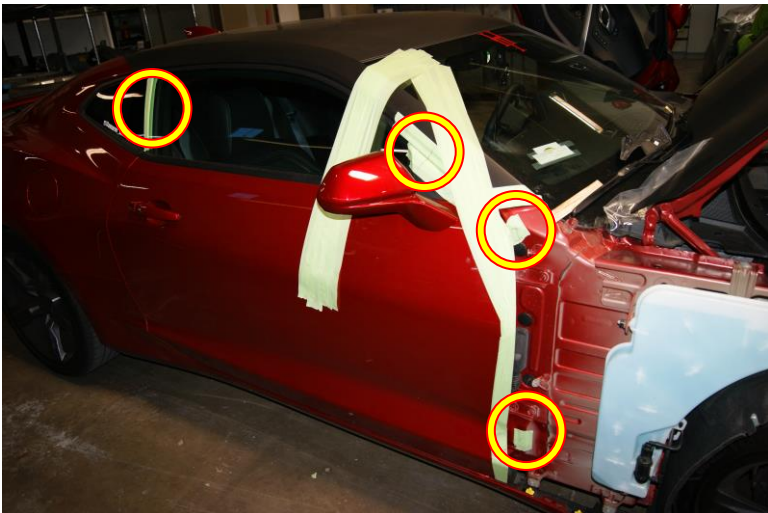
With the speaker out of the door you will now be able to remove the "Door Catch" by removing the 3 bolts securing it. It will need to be removed through the speaker hole.



You will need to remove one of the apron brackets. This will allow you to install the new VDI hinge kit flush on the car



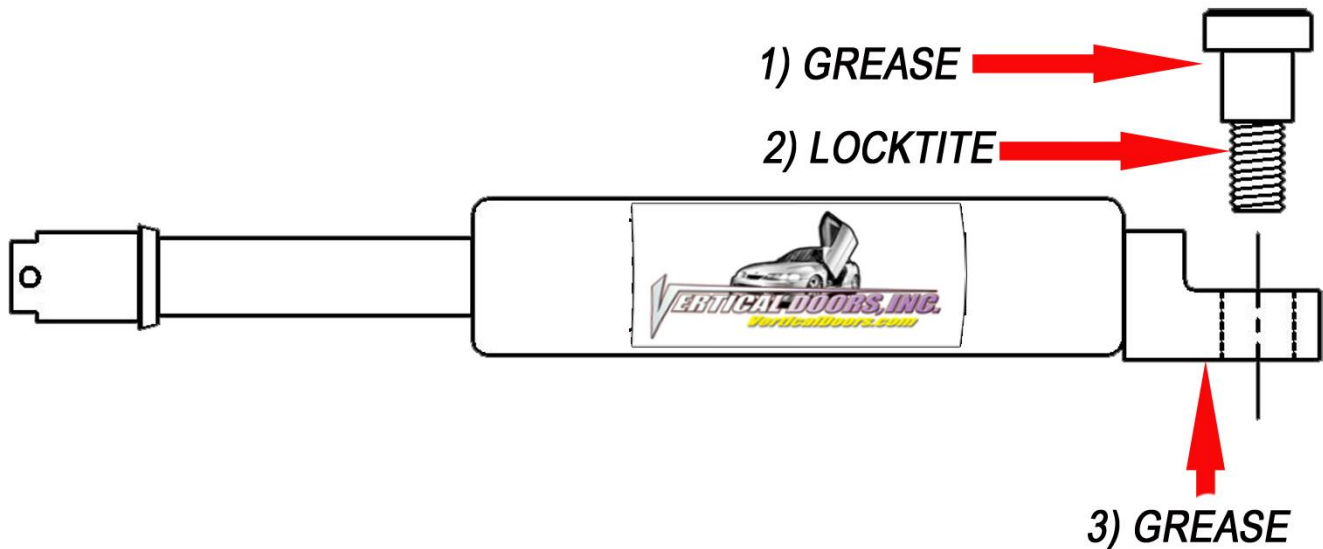
Before removing the factory hinges you **MUST** mark the factory location of the door on the vertical and horizontal planes. Also mark and measure the distance between the apron and the edge of the door by the top and bottom hinge.



Place tape around the door and body of the vehicle as shown to help you locate the factory location. Then use 2" painters' tape to secure the door to the body.

*Note: note the most important part of the installation is marking the factory location of the door.*

After making sure you have all the marks you need in case the door moves during installation, you can remove the factory door hinges. After installing the new VDI kit you should be able to raise the doors, Install the shocks, and start the fine tuning your new VDI kit.



***\*IMPORTANT STEP: DO NOT SKIP THIS STEP. THIS STEP IS CRUCIAL IN YOUR INSTALLATION PROCESS, IF THIS STEP IS NOT COMPLETED WHEN INSTALLING THE VERTICAL DOOR KIT; ALL WARRANTIES ARE VOIDED, AND MAY CAUSE FUTURE PROBLEMS WITH YOUR VERTICAL DOOR SYSTEM.***

***1ST, make sure you put grease on the body of shoulder bolt where the arrow is pointing.***

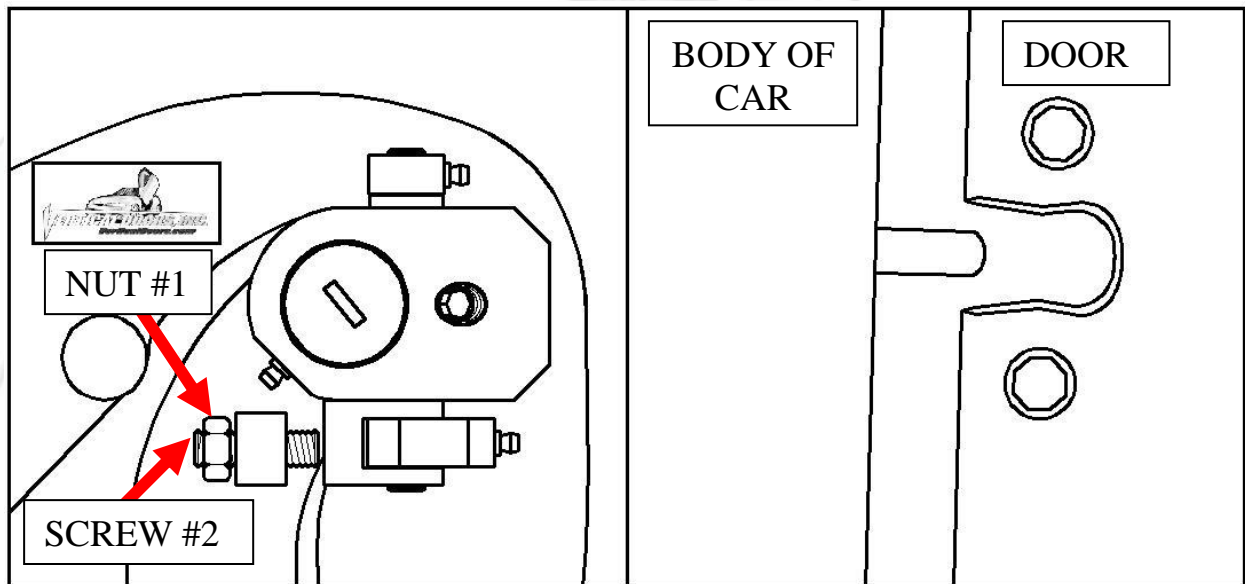
***2ND, make sure you put red Locktite, where the arrow is pointing, on thread of shoulder bolt.***

***3RD, make sure you put grease on the bottom side of the shock end.***



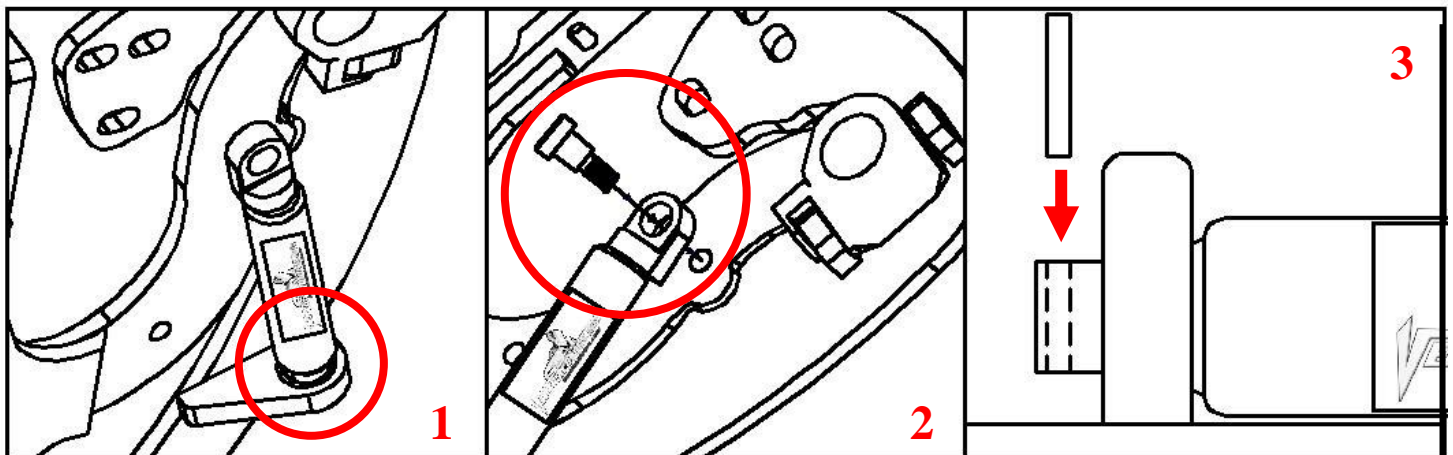
***WARNING! THE USE OF ANY TYPE PLYERS, PAINT OR FOREING MATERIALS ON THE SHOCK'S BODY OR SHAFT WILL VOID THE WARRANTY.***

Once hinge is locked in place, break nut #1 then turn Allen set screw #2 on fig until it hits the block then open the door and continue to adjust until the door matches with the striker, open and close door making sure it closes like factory.



*Hint\*(leave #1 nut loose until shock is installed Allen set screw will have to be re-adjusted after shock is installed.*

Install the shock.

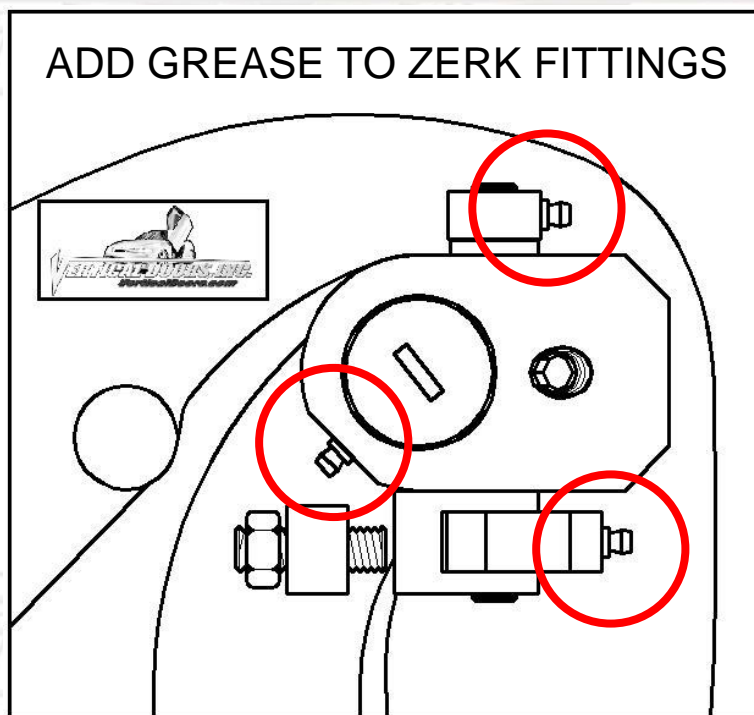
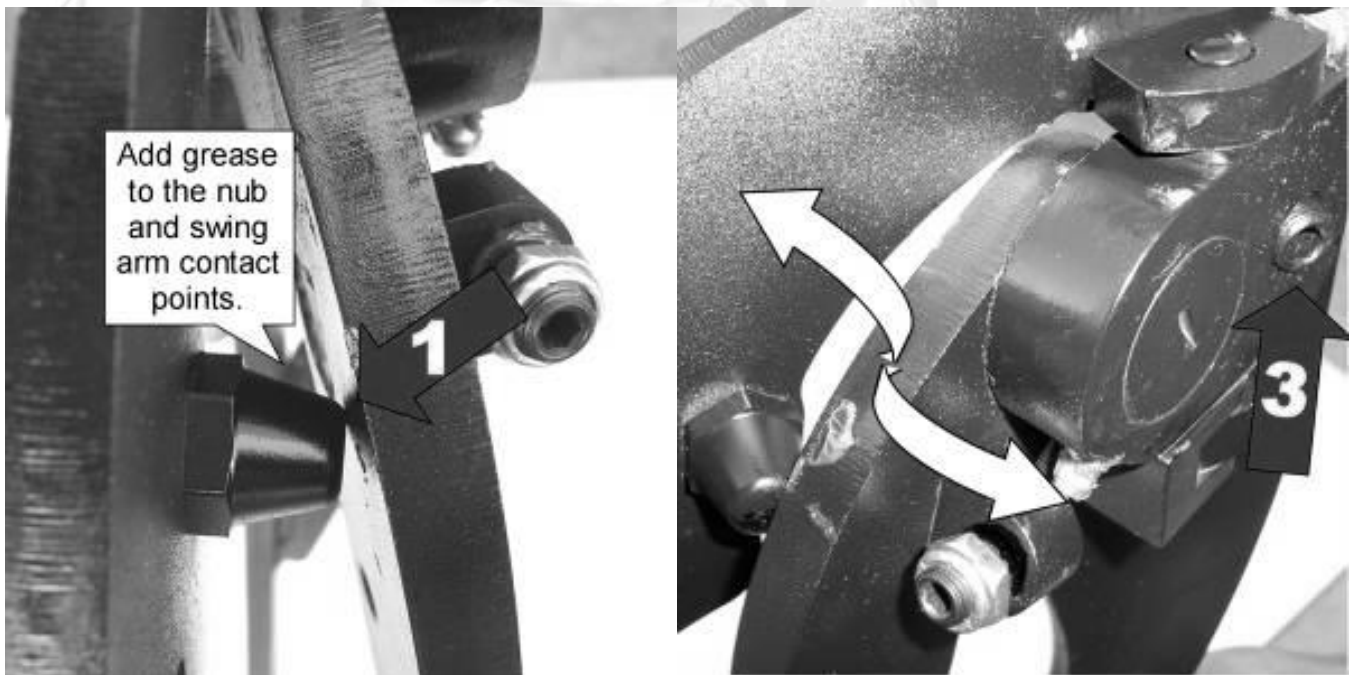


*Hint\* (You will need a helper to raise the door). (Slip the spherical rod mount into the spherical ball bearing (1). Using a 1/4 Allen wrench, tighten the screw into the swing arm (2). After the shock is installed secure it by installing the pin in the bottom shock end (3).*



After shock is installed re-install door panel and lift the door. Adjust door opening screw #3 clockwise until distance between nub and swing arm is enough so that the swing arm moves up and down freely.

*Hint\* (Fine tune the Allen Adjustment screw (#2) to realigned striker with door. After the door is align test door by opening and closing, lifting and lowering door several times.*



**Note: Do not install fender until the adjustment of the door is accurate, and the set screw is tightly secure. Also make sure everything is tight, adjustment is set and everything is Loctite.**

Note: wire boot will have to be cut in half, use friction tape / cloth wire loom tape to protect the exposed wires.

You will need to tuck the large connector inside the hole in the firewall, then use the supplied plate and grommet to cover the opening.

It should be done as shown in the photo on the right.

The wire harness will be inside the firewall.

Use one screw or rivet to secure the plate to the body

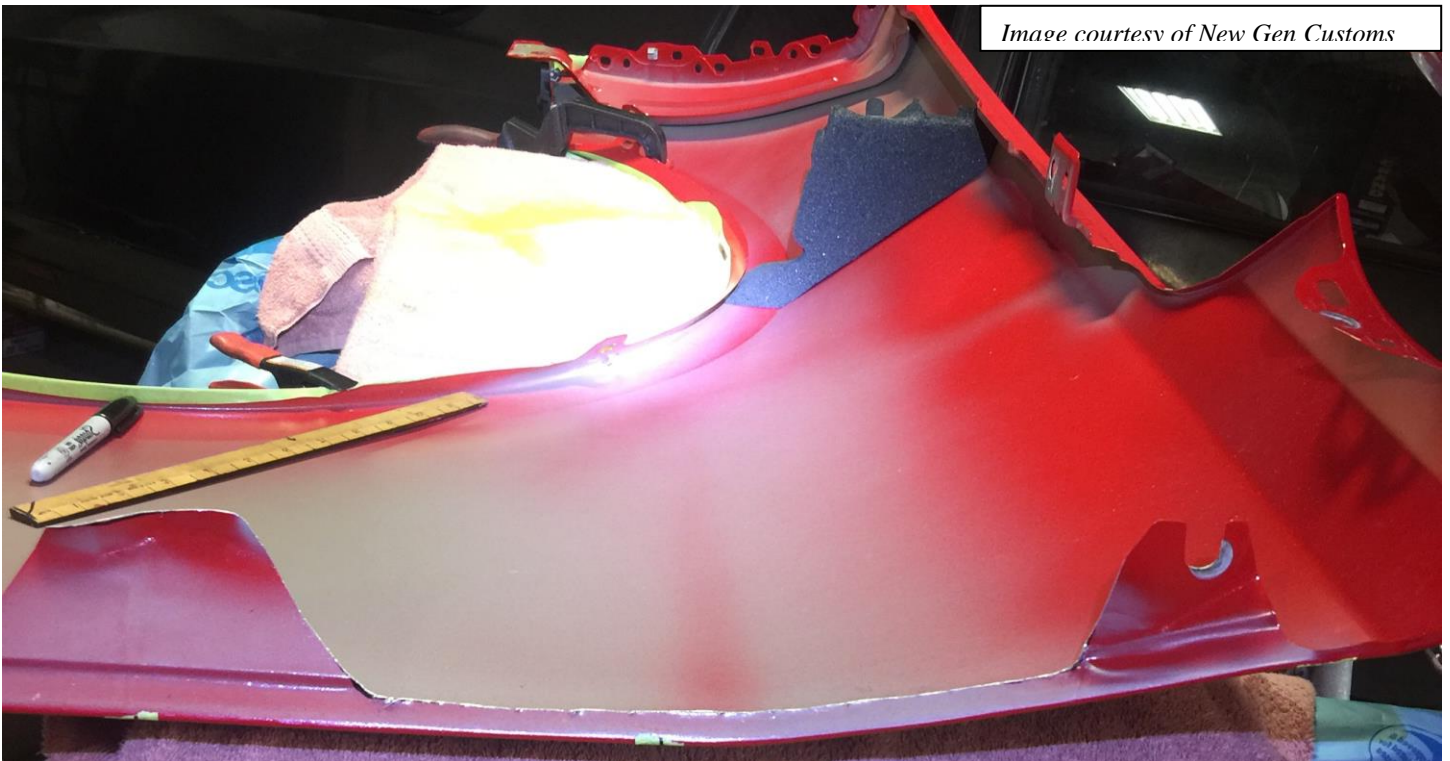


There are two options for the firewall wire boot.

2. Flip the connector upside down. The swing arm will push on the boot, but since there are no wires in the bottom half it should be ok.



Cut the inner lip of your fender to make room for the new Vertical Doors hinge. Note: After you have cut the fender use a sander or grinder and make sure the surface is completely flat. Cut the fender along the inside mark of the tape.



Close the door and replace the fender.

*Hint\*(Make sure the electrical wires don't get pinched enough to damage wires)*

For the other side just follow the same steps.

**Thank you for your purchase of the**

# ***VERTICAL DOORS INC. SYSTEM***

*Simply Uplifting*



## NOTE:

Vertical Doors Inc. assumes no responsibility for any damages caused by improper installation