

# GEN 5 CAMARO - VENT INSTALL GUIDE



**1** Using a small screwdriver, remove trim ring from vent housing.



**2a** Release locking tabs and remove vent face from vent housing.



**2b** *NOTE\*\* Detent pin can fall out when removing vent face. Be sure to remove and set aside for reinstallation.*



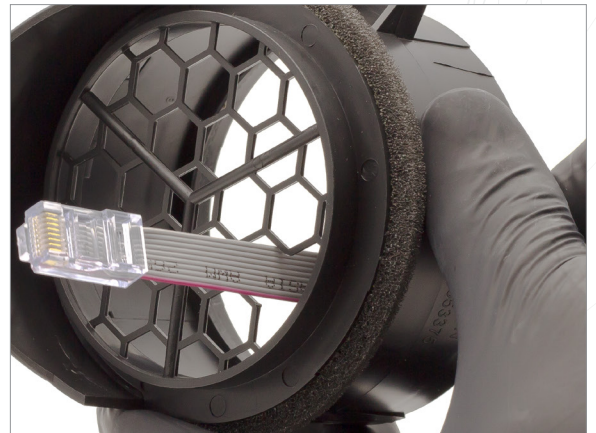
**3** Remove lower vent slat and bracket from vent face.

## WARRANTY & LIABILITY:

Neither P3 Cars, nor its dealers or agents shall be liable in any way, for any damage, loss, injury or other claims, resulting from the installation or use of this product. By purchasing or installing this product, you assume all liability of any kind connected with the use and/or application of this product. If you are unsure that you can safely install and use this product, consult a qualified installer or mechanic. The warranty on this product covers only the product itself for a period of 6 months from the date of purchase, and it will be at our discretion to repair or replace the affected parts. No user serviceable parts inside. Warranty will be voided if product shows physical damage.



**4** Cut and remove highlighted section of honeycomb for cable access.



**5** Feed cable through space where mesh was removed.



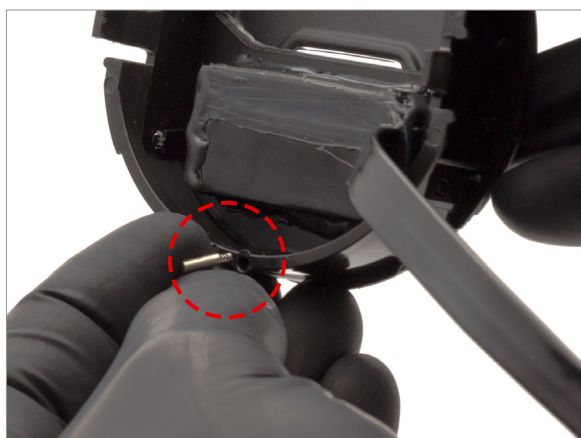
Please download the latest copy of this document from [www.p3cars.com/install](http://www.p3cars.com/install)



**6** Install display into vent face.



**7** (optional) apply glue to bottom two tabs of the display



**8a** Replace detent pin.



**8b** Install vent face back into vent housing. Be sure that detent pin stays in position.

#### WARRANTY & LIABILITY:

Neither P3 Cars, nor its dealers or agents shall be liable in any way, for any damage, loss, injury or other claims, resulting from the installation or use of this product. By purchasing or installing this product, you assume all liability of any kind connected with the use and/or application of this product. If you are unsure that you can safely install and use this product, consult a qualified installer or mechanic. The warranty on this product covers only the product itself for a period of 6 months from the date of purchase, and it will be at our discretion to repair or replace the affected parts. No user serviceable parts inside. Warranty will be voided if product shows physical damage.



**9** Reinstall trim ring onto vent housing.



**10** You are now ready to install your vent into your vehicle!